



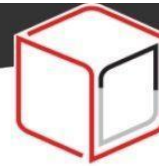
STEP Output Conveyor (Operation Manual)



CE

48313010 Manual UK 100423
Copyright © Sal-Tech 2023





COMPANY INTRODUCTION

"We believe packaging solutions for our customers should be simple, easy to use, ergonomic and sustainable.

We offer a wide range of packaging products and solutions, and web design and engineer production lines specifically built to your needs.

Our motto is simple: Sal-Tech Easy Packaging makes your life simpler through engineering and good design, and your job less stressful. We Keep Things Together."

Gunnar Salbæk
Owner/CEO

About Sal-Tech Easy Packaging

Sal-Tech Easy Packaging offers a wide range of solutions for simple and reliable packaging of your products.

If it is a standard or a special solution that's needed for your assignment, we have a creative input to solve your needs, securing you an up-to-date packaging application.

Sal-Tech Easy Packaging is 100% owned by Gunnar Salbæk,

CVR no.: DK18429098 Salbæk Easy Packaging v/Gunnar Bjørn Salbæk.

Our team works together on a 100% virtual platform and therefore please forward all correspondence to support@sal-tech.com.

Bank connection: Nordea Denmark.



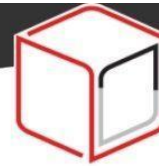
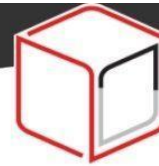


Table of Contents

I. Overview	4
II. Specifications	4
III. Layout Drawing	5
IV. Machine structure	6
V. Circuit Diagram	6





I. Overview

STEP Output Conveyor (inclined belt conveyors) is used to work with packing machine to out-feed finished products. It's very well suited for a broad range of free flowing products in the food, agriculture, pharmaceutical, cosmetic, chemical industry, .such as snack foods, frozen foods, vegetables, fruits etc.

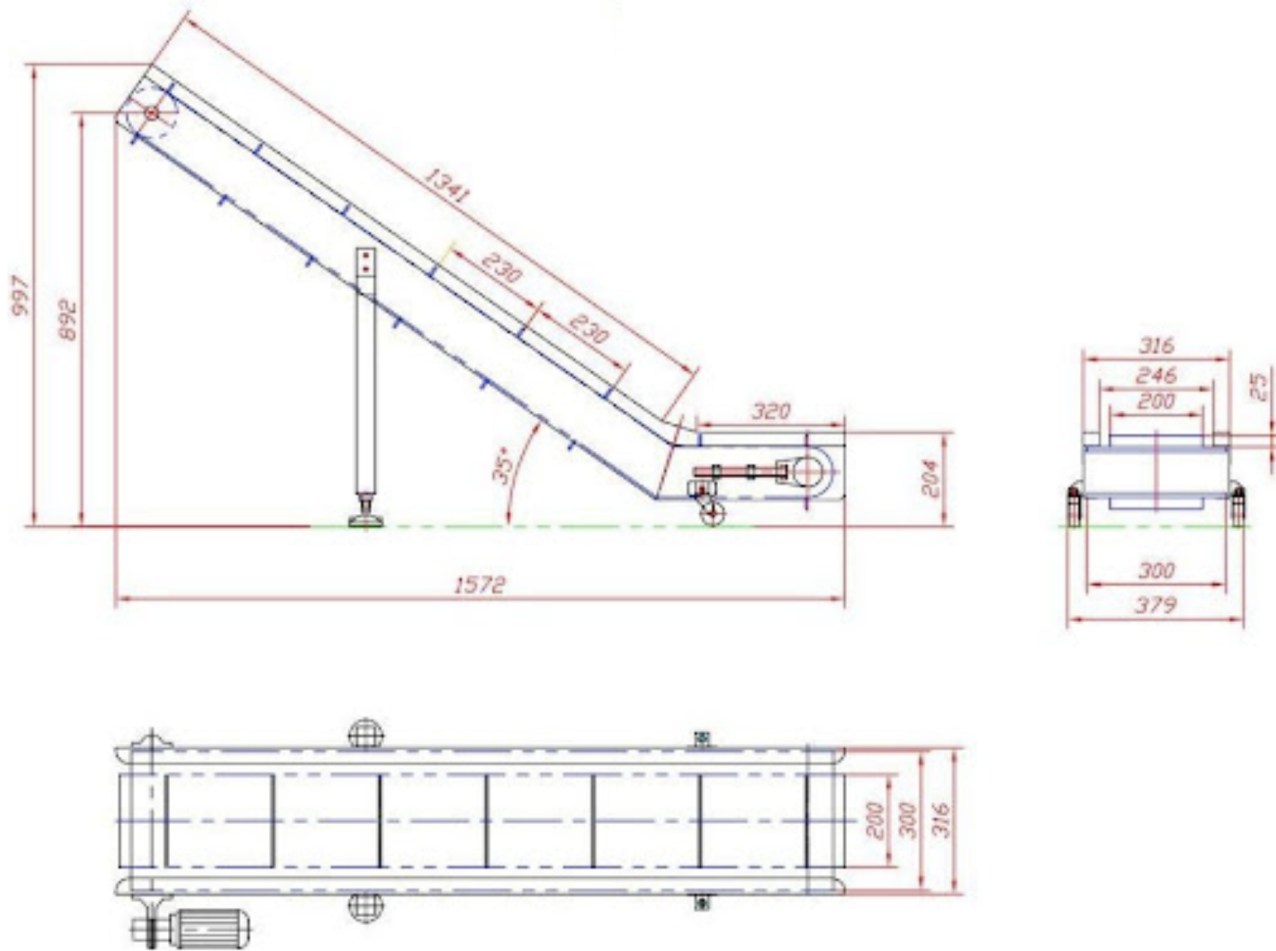
II. Specifications

SPECIFICATIONS	
Model	STEP Output Conveyor
Belt Material	Food Grade (PP)
Belt Width	200mm
Conveying Capacity	30m/min
Power Supply	AC 220V, 50Hz, 180W
Discharge Height	800mm
Item Number	48313010





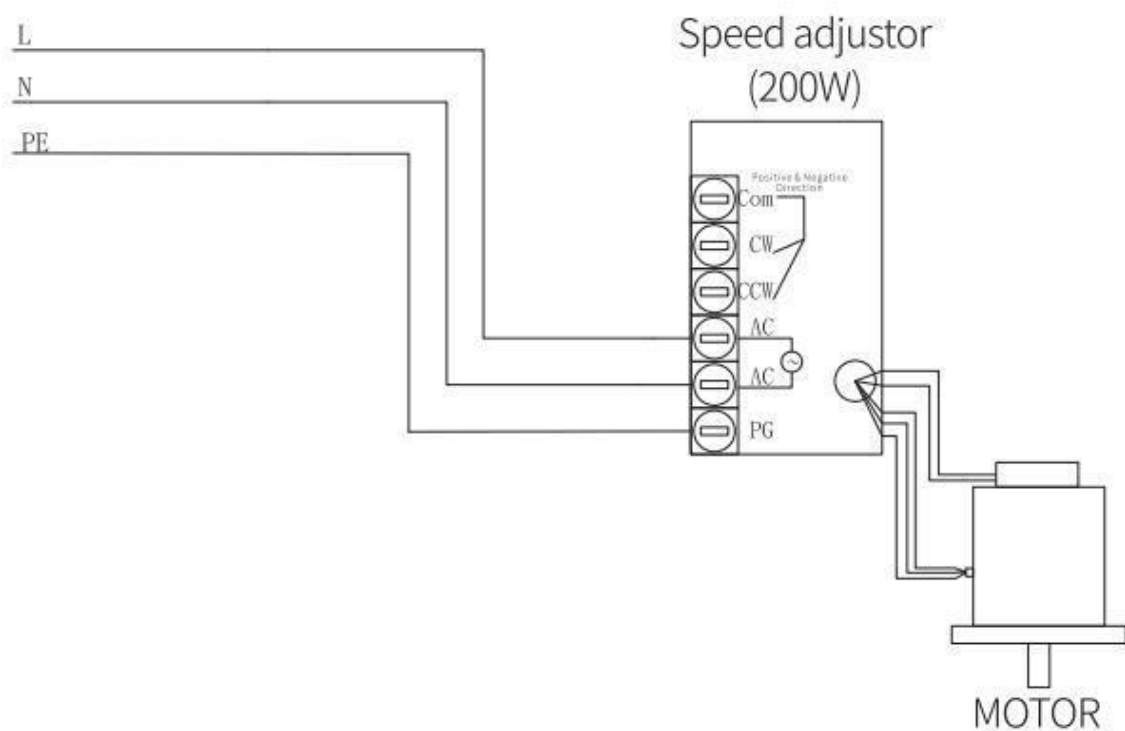
III. Layout Drawing



IV. Machine Structure

NO	Name	Specification/Model	Quantity	Remark
1	Chain-plate	L=3965mm, W=300mm, T=9mm	1	
2	Chain wheel	12Z-2 line, 40x40	4	
3	Gear motor	RV30-15--200W/220V	1	
4	Speed adjuster	200W	1	
5	Cooling fan		1	
6	Bearing	UCPA204	1	φ20
7	Bearing	HA204	1	φ20
8	Food pad	D80-M16-L75	2	
9	Caster		2	

V. Circuit Diagram





CONTACT US FOR MORE INFORMATION

Denmark: +45 7027 2220
USA: +1 310 773 3423
Spain: +34 699 900 987
Hongkong: +852 8170 1025
Sweden: +46 31 799 5398
Italy: +39 351 988 0682
Philippines: +63 916 777 5299

