

Sal-Tech Easy Packaging Packaging Solutions HANDLING



WE KEEP THINGS TOGETHER

**Machines,
and
Materials**

JC 3388 August 2022



sal-tech.com
EASY PACKAGING

Hand Pallet Trucks

STEP HPT-AC

STEP HPT-AC hand Pallet Truck with cast iron hydraulic pump and options for nylon, rubber, polyurethane and iron wheels and option for single or tandem front wheels.



Specification	
Capacity (kg)	2000/2500/3000
Lowered Fork Height (mm)	85/75/65
Total lift Height (mm)	195/185/175
Fork length (mm)	1150/1220
Width over the forks (mm)	550/685
Steering wheel (mm)	Φ180/Φ160
Front wheel (mm)	Φ80/ Φ70/ Φ60
Self-weight (kg)	73-92
Qty/20 feet container (pcs)	180/144
Item Number	47510020

STEP HPT- SD

STEP HPT-SD Shorten Pallet Truck with cast iron hydraulic pump and options for nylon, rubber, polyurethane and iron wheels and options for tandem and single front wheels, special fork length design available are 500, 600, 700, 800, 900, 1000, 1100, 1500, 2000, 2500 for capacity of 2000kg to 3000kg.

Specifications	
Capacity (kg)	2000/2500/3000
Total lift Height (mm)	195
Lowered fork height (mm)	85
Fork length (mm)	500/600/700/800/900
Width over the fork (mm)	550/685
Steering wheel (mm)	Φ180x50
Front wheel (mm)	Φ80x70
Truck weight (kg)	65-80
Item Number	



STEP HPT-SG

HPT-SG Galvanized Pallet Truck with cast iron hydraulic pump and options for nylon, rubber, polyurethane and iron wheels and option for tandem and single front wheels.



Specifications	
Capacity (kg)	2000/2500
Total lift height (mm)	195
Lowered fork height (mm)	85
Height of handleless (mm)	443
Fork length (mm)	1150/1120
Width over the forks (mm)	550/685
Steering wheel (mm)	Φ180x50
Front Wheel (mm)	Φ80x70
Item no. variant	Price
Item Number 2000/1150	

STEP HPT-SS

STEP HPT-SS Stainless Pallet Truck with stainless steel parts including hydraulic pump, fork frame, handle, push rod, bearing, pin and bolt, etc., for meat and other food industries, dairy canning and areas where corrosive acid and saline solutions are used. Hydraulic coated pump are fully sealed, with pressure relief valve / overload valve and with left, neutral and lower position handle. With tandem nylon load rollers and steering wheels. Materials and specification are subject to change.

Specifications	
Capacity (kg)	2000/2500/3000
Total lift height (mm)	195
Lower fork height (mm)	85
Height of handleless (mm)	443
Fork length (mm)	1150/1220
Width over the fork (mm)	550/685
Steering wheel (mm)	Φ180x50
Variant Item No.	Price
2000kg/1150mm: 45678912	999,- Euro

**STEP HPT-SP**

Specifications	
Capacity (kg)	1500/2000
Total lift height (mm)	195
Lowered fork height (mm)	85
Fork length (mm)	1150/1220
Width over the fork (mm)	550/685
Steering wheel (mm)	Φ180x50
Front Wheel (mm)	Φ80x70
Truck weight (kg)	130
Item Number	

STEP HPT-SH has a heavy duty pump design, equipped with quick lift function manual unit, conforms to CE safety standard.

Specifications	
Capacity (kg)	1000
Min. Fork height (mm)	85
Max. Fork height (mm)	800
Size of fork (mm)	160x50
Width of overall fork (mm)	540/680
Length of fork (mm)	1170
Fork roller (mm)	Φ78x60
Big wheel (mm)	Φ200x50
Weight (kg)	127/138
Item Number	



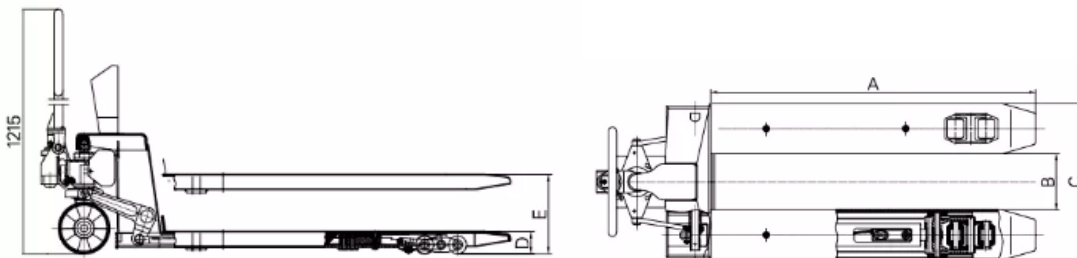
STEP Pallet wagon with Scale 2Tons



Wheel



Load Cell



Floor scales, platform scales suitable for all kinds weighing

Platform size:1000mmX1000mm 1200mmX1200mm 1500mmX1500mm 1200mmX1500mm

1500mmX2000mm or any customs size,

Capacity from 500-5000kg. 2 Tons

FEATURES:

- With Oil pressure activated lifting device
- Wheels: Polyurethane or steel
- Saves Time and Space

Item no.: 48177010

Power Pallet Truck

STEP JA-130AC

STEP JA-130AC is full power with high efficiency but low price, with AC power drive for long life operation, easy to operate multi-function handle and with top opening cover, easy to change or maintenance battery, with build in charger and meets CE safety standard.



Specifications	
Capacity	1300 kg
Fork Minimum Height	80mm
Fork Lifting Height	200mm
Fork Size	680x1220mm / 550x1150mm
Speed	6.2 km/h
Minimum Radius	R1610 / 1680mm
Driving Motor	AC 24V / 900W
Lifting Motor	DC 24V/1300W
Battery	DC 2x12V / 135Ah
Battery Charger	Portable AC 220V 24V / 150A
Weight	380 kg
Overall Size (LxWxH)	1640x718x1321mm
Item Number	

STEP JA-150AC

STEP JA-150AC has an AC power drive for long life operation, full power with high efficiency but low price, easy to operate multi-function handle, top opening cover, easy to change or maintenance battery, with build in charger, meets CE safety standard.

Specifications	
Capacity	1500 kg
Fork Minimum Height	80mm
Fork Lifting Height	200mm
Fork Size	680x1220mm / 550x1150mm
Speed	6.0 km/h
Minimum Radius	R1400mm
Driving Motor	AC 24V / 700W
Lifting Motor	DC 24V / 1300W
Battery	DC 2X12V / 120Ah
Battery Charger	Portable AC 220V 24V / 150A
Weight	380 kg
Overall Size (LxWxH)	1640x718x1321mm
Item Number	



STEP JA-SC

STEP JA-SC is like a hand truck compact design, agilely operating in tightest area for Material handling, full power with high efficiency but low price and a smart device to replace hand pallet truck, with MOSEFET Control system and easy to operate multi- functions handle, with top opening battery cover for easy to change or maintain

Specifications	STEP JC-130SC	STEP JC-160SC
Loading Capacity	1360 kg	1600 kg
Lifting Height	200mm	200 mm
Forks Width	150mm	160 mm
Forks Length	1150 / 1220mm	1150 / 1220 mm
Forks Width	550 / 630mm	550/630 mm
Load Center	600mm	600 mm
Max. Width	700mm	700 mm
Machine Height	680mm	680 mm
Machine Length	450mm	450 mm
Drive Wheel	250mm	250 mm
Forks Wheel	75mm	75 mm
Drive Motor	0.70 kw	0.90 kw
Pump Motor	1.30 kw	1.30 kw
Travel Speed	4.5/6.0 km/h	5.0 / 6.2km/h
Turning Radius	1250mm	1610*1680mm
Battery	2x12V / 70Ah	2*12v/135Ah
Charger	15Ah	25Ah
Net Weight	280kg	290kg
Item Number		



STEP Manual Stacker

STEP HS-E

STEP HS-E Hand stacker has an easy maneuverability and secures braking, economic and mobile work aid, with compact and space saving storage, optional tiller pumping lifting and foot pedal lifting.

Specifications	STEP HS-E ("C" Frame)		
	E1.0	E1.5	E2.0
Rated Lifting Capacity	1000kg	1500kg	2000kg
Max Lifting Height	1600/2000/2500/3000		1600/2000/2500
Height of Forks Lower	85mm		
Fork Length (mm)	900/1000/1100mm		
Adjustable Width of the Forks	320-740mm		
Lifting Speed	20 mm/stroke	14 mm/stroke	12mm/stroke
Lowering Speed	Controllable		
Operations Power of Hand Crank	24kg	32kg	
Outer Width of Front Leg	690mm		
Min Refuel Volume for Fuel Tank	1.5L	2.0L	2.5L
Front Wheel size	75x52	75x70	75x70
Rear Wheel size	180x50		
Overall Size (mm)	2030x780x1450mm	2040x780x1470mm	
Self-Weight (kg)	150/210/260/20kg	250/330/400/469kg	270/350/430kg
Item Number	47510010		



STEP HS-A

STEP HS-A Hand stacker is the light model with light frame, economic and mobile work aid, with compact and space saving storage and optional tiller pumping lifting and foot pedal lifting.

Parameters	STEP HS-A (Light Frame)		
	A1.0	A2.0	A3.0
Rated Lifting Capacity	1000kg	2000kg	3000kg
Maximum Lifting Height	1600mm		
Height of Forks Lower	100mm		
Fork Length	900mm		
Adjustable Width of the Forks (mm)	200-580mm	240-680mm	300-770mm
Lifting Speed mm/stroke	20mm/stroke	14mm/stroke	10mm/stroke
Lowering Speed	Controllable		
Operations Power of Hand	24kg	32kg	40kg
Outer width of front leg (mm)	720mm	740mm	750mm
Min refuel volume for fuel tank (L)	1.6L	2.0L	3.0L
Front wheel size (mm)	100x50mm		
Rear wheel size	180x50		
Overall size (mm)	2050x730x1380mm	2050x740x1480mm	2050x740x1650mm
Self-weight (kg)	115	180	280
Item Number			



STEP HS-D

STEP HS-D Hand Drum Stacker

Specification	
Capacity	350kg
Lifting Height	1500
Overall Dimensions	1190x890x2000mm
Self-Weight	160kg

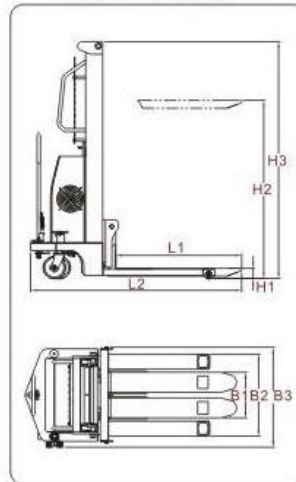


STEP Semi Electric Stacker

STEP SES Series

STEP SES has a strong robust and classical design, with appealing look and with fluent outline that make it stands out from traditional stacker, made of high quality steel to ensure stability and strength, durable and serviceable.

SIZE PARAMETERS



DC Power Pack Unit



Specifications									
SES Model Parameters	1.0/16	1.0/20	1.0/25	1.0/30/33	1.5/16	1.5/20	1.5/25	1.5/30/33	2.0/16
Capacity(kg)	1000	1000	1000	1000	1500	1500	1500	1500	2000
Lifting Height (mm)	1600	2000	2500	3000/3300	1600	2000	2500	3000/3300	1600
Frame Type	Single	Double			Single	Double			Single
Fork Length	1000mm								
Minimum Height of Forks Lowered	90mm								
Load center	500mm								
Charging Voltage	AC220V								
Motor power	1.6KW								
Outer Width of Front Leg	635mm								
Inner Width of Front Leg	395mm								
Adjustable Width of the Fork	360-690mm								
Rear Wheel Size	Φ180x50mm								
Front Wheel Size	Φ80x65- Φ80x93m								
Weight (kg)	280	305	325	350/410	305	350	365	415/420	350
Low Height of Fork	2080	1650	1900	2150/2300	2080	1650	1900	2150/2300	2080
Max Height of Fork(mm)	2080	2650	3125	3625/3925	2080	2650	3125	3625/3925	2080
Item Number									

STEP Full Electric Stacker

STEP PPS Series

STEP PPS model full electric stacker. With imported hydraulic system from Europe that enhance the efficiency and safety.

Smooth travel and lift with excellent control reduces products damages and increases productivity. With lift limit switch operates at maximum lift height, 24V electrical system, with high quality hydraulic pump, brake is activated by the control handle position, the CURTIS electronic controller helps provide plenty of low end torque while increasing motor and battery life and excellent stability in operation.

Equipped with double frame and double pump



Specifications								
PPS Model Parameters	10/33	10/30	10/25	10/16	15/33	15/30	15/25	15/16
Capacity	1000kg				1500kg			
Minimum Fork Height	85mm							
Max Lifting Height (mm)	3300	3000	2500	1600	3300	3000	2500	1600
Max Frame Height	3800	3500	3000	2100	3800	3500	3000	2100
Min Stacker Height	2250	2090	1850	2050	2250	2090	1850	2050
Max Stacker Width	680mm							
Fork Length	1020mm							
Load Center	500mm							
Overall Length	2280/1920mm				2280/1860mm			
Overall Width	820mm							
Minimum Revolving Radius	1750mm				1690mm			
Frame Model	Double Frame							
Pump Model	Double Pump							
Drive Wheel Size	Φ260x80							
Front Wheel Size	Φ130x55							
Slope Angle	Load/Unload 5%/10%							
Lifting Motor (V/W)	DC24/2200							
Driving Motor (V/W)	DC24/900				DC24/1200			
Battery (V/Ah)	2*12/180				2*12/210			
Battery Continues Working Time	4 hours				5 hours			
Driving Speed	Controllable							
Battery charger (V/A)	24/30				24/40			
Machine Weight (kg)	935	905	802	750	1080	1080	945	810
Item Number								

STEP Hand and Table Truck



STEP JL150	STEP JL30	STEP WS	
Blue Plastic platform hand truck		Black Plastic Platform Hand truck	
730x490	900x600	730x490	900x600
2 swivel + 2 rigid caster, TPR Tire, One Ball Bearing			
Item Number	Item Number	Item Number	Item Number
PRICE	PRICE	PRICE	PRICE



STEP JL300-AM1	STEP JL150-T2/JL300-T2	STEP WS
Plastic Platform HandTruck with Net	Plastic Double Platform Trolley	Triple Platform Trolley
90x600	730x490 / 900x600	900x600 / 700x490
Item Number	Item Number	Item Number

Hand Table Truck STEP HT300



Specification	
Capacity (kg)	300
Max lifting height (mm)	900
Min lowest height (mm)	215
Dimensions of table (mm)	700x450x35
Overall height (mm)	970
Self-weight (kg)	55
Packing size (mm)	900x520x420
Item Number	

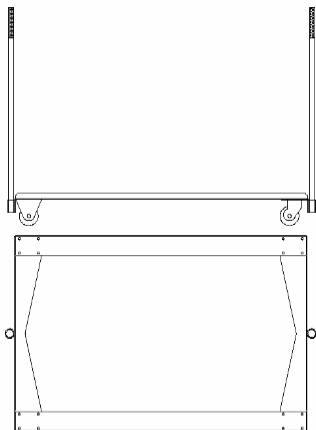
STEP Wagon for Pallets 1/1

Euro pallet, Half pallet

Used for easy moving and transportation of pallets. Designed specifically for Euro Pallets.

Euro pallet wagon for heavy loads 400kgs, with eye for handle.

- Black paint
- Country of Origin Denmark



Palle vogn vist med træk stang i begge ender.

Item Number	Model
82291000	1/1 Euro Pallet
82291020	For ½ Euro Pallet
82291010	90cm handle for wagon

STEP scale system for mounting

Complete set that includes:

- Indicator type STEP LP 7510 with RS232 output, for printer or extra display.
- Connection box for 4 loadcells (price alone 525,-)
- 4 pcs. Loadcells type STEP LP 7110A 2 tons
- 1 pcs manual

Item No.: 48200010

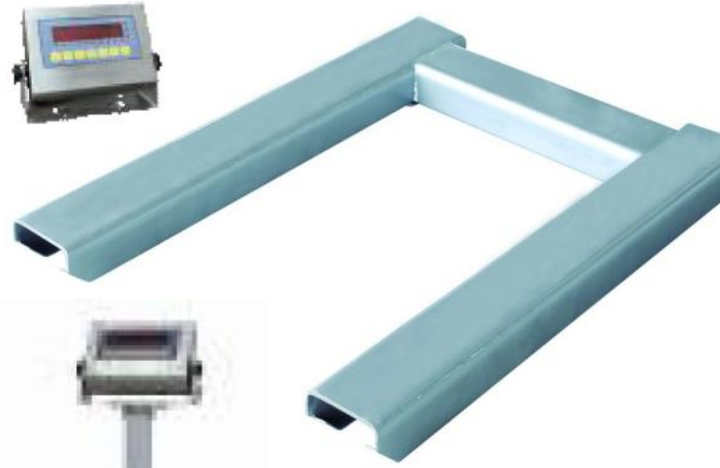


STEP Pallet scale LP7624

U-arch with wheels and handle so it is easy to move.

- Dimension L1260xB840xH75mm
- Capacity 2 tons
- Electrical Supply 1x230V 50Hz
- Status of stock: On stock

Item No.: 48176240



STEP Floor scale LP7610

Pole for indicator

- Dimension L500xB400xH100mm, Capacity 150kg
- Cover on plate 1mm 304 stainless
- Electrical Supply 1x230V 50Hz
- Status of stock: STEP Lager

Item No.: 48176100



Stainless steel edition Item No. 48716110