

# Sal-Tech Easy Packaging Packaging Solutions MARK & LABEL



**WE KEEP THINGS TOGETHER**

**Machines,  
and  
Materials**

January 2021 Mark & Label JC 3377



**sal-tech.com**  
**EASY PACKAGING**

# Sal-Tech Easy Packaging

## Mark-Print-Label Data capture, software & distribution



Positioning single or bulk products and filming them either 3 side fully welded, 2 side open ends is often done manually and automatically depending on the size of the production run and series. Used for both end user and distribution packaging of items, boxes, cans, bottles, magazines, books, cd's, dvd's and many more.

## Marking and Labeling Machines

### STEP AC-8A Thermal Transfer Printer

The STEP AC-8A is applicable for printing on most flexible wrappers with print area of 25mmx50mm, no color, no smell. It can print a great variety of one dimensional and two dimensional up to 300DPI bar codes on various films; the high speed and stable print effect provide the feasibility of printing bar code and pattern

#### Features

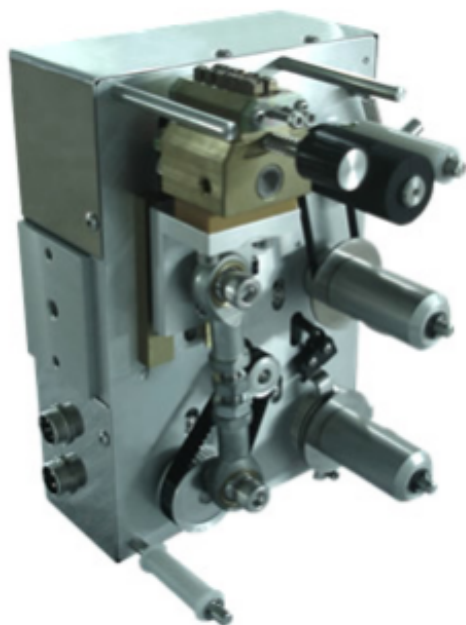
- Non-toxic, safe operation.
- Low consumption and high efficient without noises.
- Simple Operation. Easy to use.
- Real-time variable information

The STEP AC-8A is very economical and uses a 60mmx300m ribbon to print up to 20~25 thousand times of two lines information which can be satisfied with most customers whose production for all day in one machine.

Simplified operation, with communication to the computer via RS232 connector, or download the data by USB interface. With an internal clock, the STEP AC-8A achieves various real time and date while printing on-time, like production date, expiry date, lot number, series number and code bar etc.



### STEP KP-F2 Hot Foil Printer



The STEP KP-F2 reciprocating type automatic coder adopts automatic electric power reciprocating type printing and thermal transfer technology, it substitutes ribbon for ink to print clear characters on flexible wrapper like PT,PE,KT,OPP,CPP,aluminium foil, plastic bag, various composite plastic films and paper, plastic simple to use and convenient in maintain. It is widely used to print production date, lot number etch in food, beverage, and pharmaceuticals etc. Also it is mainly used in vertical type reciprocating knife-sealing model packing machine and liquid packing machine.

#### Features

- Simple operation
- Adjustable Print Speed
- Full Automatic Stepping Control
- High quality, easy to maintain
- Safe and reliable
- Alert for run out of ribbon support the alert for run out of ribbon

Specifications	
Print area	25x50mm
Print speed	50mm/s~200mm/s(70~75 times/min) Intermitent
Power supply(V)	Single phase according to Local Standard
Temperature	5°C~40°C (41°F~104°F)
Ribbon size	60mmx300m (depends on different packing films)
Input signal	Printing signal/No ribbon alert/Fault alert
Controller	High-light self-illuminating display
Item Number	95550030

The STEP KP-F2 reciprocating type automatic coder adopts automatic electric power reciprocating type printing and thermal transfer technology, it substitutes ribbon for ink to print clear characters on flexible wrapper like PT,PE,KT,OPP,CPP,aluminium foil, plastic bag, various composite plastic

Specifications	
Print Area	Up to 4x35 for single row, approx. 15 words Up to 10x35 for double row, approx. 30 words Up to 15x35 for triple row, approx. 30 words
Words	Digital, Chinese and English words
Ribbon	Maximum width is 35mm
Power Supply	Single Phase according to Local Standard
External Dimensions	210x143x128mm
Weight	7KG
Item Number	95550040

## STEP OM-12 Thermal Transfer Printer

The STEP OM-12 is a high speed and high quality thermal transfer printer. It is applicable for a wide variety of packaging printing materials with an effective print area of 50mmx40mm with no less than 13 words. The machine is capable of printing high quality one dimensional and two dimensional bar codes up to 300dpi.

Equipped with an internal clock, the STEP OM-12 is able to print real-time variables such as time stamps. This feature is ideal for printing real-time production dates, expiry dates, series numbers, bars codes and other similar essential production information.

### Features

- High speed and high quality printing
- Internal clock for real-time informatino printing
- Compatible with a wide variety of printing materials
- Uses 60mmx500m ribbon which eliminates frequent changing of ribbons.
- High quality print up to 300dpi



Specifications	
Print area	25x50mm
Print speed	50mm/s~200mm/s(70~75 times/min) Intermitent
Power supply(V)	Single phase according to Local Standard
Temperature	5°C~40°C (41°F~104°F)
Ribbon size	60mmx300m (depends on different packing films)
Input signal	Printing signal/No ribbon alert/Fault alert
Controller	High-light self-illuminating display
Item Number	NA

## Label dispenser for lable rolls, Manual - One to many



Specifications	
Lable area width	150-300mm
Item Number	42217300

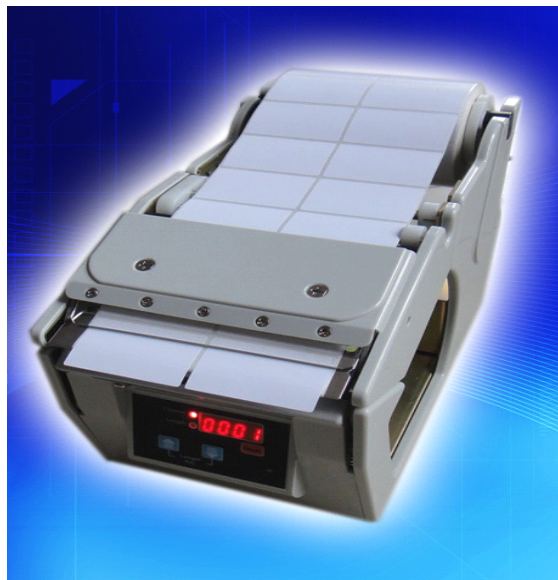
**STEP CX-100 Label Dispenser**

It can be used in any label sizes. Well performed dispenser and very easy to operate. Suitable for small sizes label to overall sizes. It has an automatic rewind. Liner scraps for neatly working area.

Specifications	
Dimensions	(LxWxH) 280x136 x 174mm
Feed Speed	130mm/sec (speed adjustable)
Available Label Width	5~100mm
Available Label Length	4~450mm
Max. OD of Roll	250mm
Label Material	Any material can be used
Label Size	From small To general
Electrical Requirements	110~220V 50/60Hz
Machine Weight	3.6kg
Item Number	42217000

**STEP CX-130 Label Dispenser**

It can be used in any label sizes. Well performed dispenser and very easy to operate. Suitable for small sizes label to eneral sizes. It has an automatic rewind liner scrap for neatly working area. Uploading and operating is very simple.



Specifications	
Dimensions	(LxWxH) 280x166 x 174mm
Feed Speed	130mm/sec (speed adjustable)
Available Label Width	5~130mm
Available Label Length	4~450mm
Max. OD of Roll	250mm
Label Material	Any material can be used
Label Size	From small To general
Electrical Requirements	110~220V 50/60Hz 4.1 Kg
Machine Weight	4.1kg
Item Number	41217020

**STEP CR-130 Label Dispenser**

Specifications	
Dimensions	(LxWxH) 210x210x220mm
Feed speed	From 130mm/second
Available Width	10 ~ 140mm
Available Length	4 ~ 200mm
Max. OD of Roll	250mm
Electrical Requirement	220V 50/60Hz (110V available)
Machine Weight	4.5kg
Item Number	42217030





### STEP CX-250 Label Dispenser

The STEP CX-250 Label Dispenser smoothly peels out the label. No sign of crumpled made of peeling. It has a label counting function and can adjust the size and the speed of the label.

Specifications	
Suitable Label Length	6mm~124mm
Suitable Label Width Backing Paper/mm	130mm
Suitable Diameter Roll	φ163mm
Suitable Inner Diameter Roll	φ76mm
Exceed Speed	5.5~12m/min
Weight	5kg
Electric Tension	220V
Power	50W
Equipment Overall Size	(LxWxH) 250x198x205mm
Item Number	42217040

### STEP CX-371 Label Dispenser

The STEP CX-371 Label Dispenser the label cleanly and smoothly peeled. This model support the big label sizes not less than 150mm width. Each size has its own speed level to be adjusted.

Specification	
Suitable Label Length	6-120mm
Suitable Label Width (backing paper /mm)	10-130mm
Suitable Diameter Roll	φ240mm
Suitable Inner Diameter Roll	φ76mm
Exceed Speed	5.5~12m/min
Weight	about 12kg
Rate	50HZ
Electric Tension	220V
Power	15W
Equipment Overall Size	(LxWxH) 430×340×340mm
Item Number	42217050



### STEP CX-118C Label Dispenser

The STEP CX-118C Label Dispenser is used in labeling machines and fully automatic peel. It easily separate paper and reduces sticky effect. It quickly peels the plaster of the print pattern.



Specifications	
Beyond Length	5~120mm
Label Speeded Glass	250cm/minute
Inner Diameter of Scroll	Minimum 20mm
Diameter of Scroll	Maximum 200mm
Power Source	220V/50Hz
Power	15W
Weight	4Kg
Overall size	(LxWxH) 260x290x260mm
Item no.	42217060

## STEP A2000 Labeling Machine

- Vertical round bottle labeling machine, micro-processing loop control system, touch man-machine interface;
- 25-120 mm in diameter, round bottle at the same time to paste the 1-2 labels;
- Power: 220V, 50Hz, 0.4KW
- Label specifications: L (15 ~ 300) mm x H (15 ~ 130) mm
- Product Specification: Dia Ø20 ~ Ø80; H (25 ~ 300) mm
- Labeling speed: 0 ~ 75 / min (a label)
- 0 to 50 / min (two tags)
- Dimensions: L1800mm W1100mm, H1300mm
- Accessories: coders D-1



## STEP AB2000 Labeling Machine

- Vertical round bottle labeling machine, labeling of objects can be within 120 mm in diameter, round bottles, or thickness ≤ 120 mm side
- Power: 220V, 50Hz, 0.5KW
- Label specifications: L (15 ~ 300) mm x H (15 ~ 130) mm
- Product Specification: Dia Ø20 ~ Ø80; H (25 ~ 300) mm
- Labeling speed: 0 ~ 75 / min (a label)
- 0 to 50 / min (two tags)
- Dimensions: L1800mm W1100mm, H1300mm
- Accessories: coders D-1



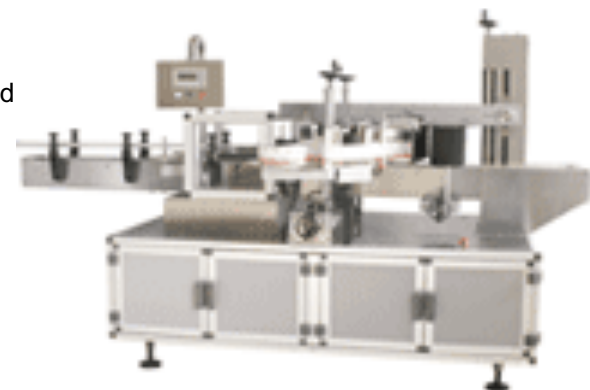
## STEP AC2000 Labeling Machine

- Horizontal Wrap automatic labeling machine for circular object of diameter 10 to 24 mm cannot stand labeling.
- Power: 220V, 50Hz, 0.5KW
- Label specifications: L (15 ~ 300) mm x H (15 ~ 130) mm
- Product Specification: Dia Ø20 ~ Ø80; H (25 ~ 300) mm
- Labeling speed: 0 ~ 250 / min (full coding)
- 0 ~ 220 sheets / min (all marked with a code)
- 0 to 280 sheets / min (non-full-scale with a code)
- 0 to 250 sheets / min (full scale with a code)
- Dimensions: L2000mm W800mm, H1600mm
- Accessories: coders D-1



## STEP B2000 Automatic Labeling Machine

- Automatically the front and back labeling machines for flat and oval-shaped positive and negative labels.
- Power: 1P, 220V, 50/60Hz, 0.6KW
- Label specifications: L (15 ~ 300) mm x H (50 ~ 130) mm
- Product Specification: Dia Ø20 ~ Ø120; H (40 ~ 300) mm
- Labeling speed: 0 ~ 120 /
- Dimensions: L2400mm W1400mm, H1300mm
- Accessories: coders D-1



## STEP CB2000 Automatic Labeling Machine

- The surface of equipment conveyor automatic labeling machine, applicable to  $\leq 150$  mm wide flat object.
- Power: 1P, 220V, 50/60Hz, 0.2KW
- Label specifications: L (15 ~ 300) mm x H (15 ~ 150) mm
- Product Specifications: L (20 to 300) mm W (10 ~ 200) mm.
- Labeling speed: 0 ~ 300 /
- Dimensions: L1251mm W1000mm, H1700mm



## STEP D-Type 1 labeling Machine, Code Printer

- Heated coders can be used for a variety of labeling machine, able to print the DLC, DLV bar code and product lot number.



## STEP B72-Type Labeling Head

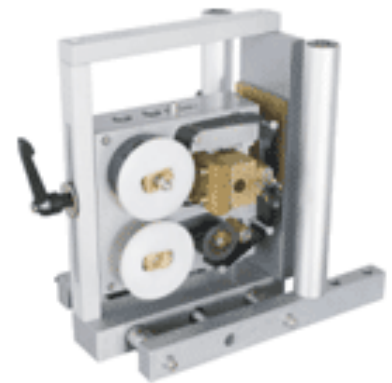
The label distribution function at any time send an alternate label



## STEP B76-Type Semi-

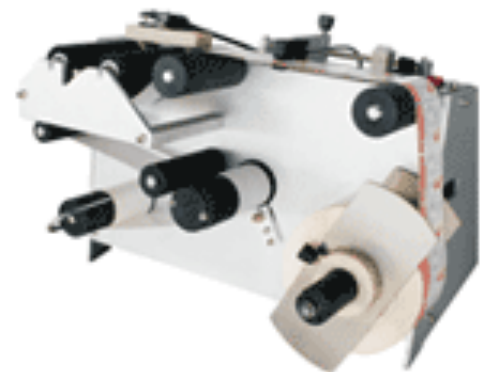
### Automatic Labeling Head

- Semi-automatic round bottle labeling machine.
- Power: 1P, 220V, 50/60Hz, 0.6KW
- Label specifications: L (15 ~ 350) mm x H (15 ~ 130) mm
- Product Specification: Dia  $\varnothing 45 \sim \varnothing 110$ ; H (40 ~ 350) mm
- Labeling speed: 0 ~ 50 / min



## STEP CA2000 Automatic Labeling Head

- Can be multi-functional adjustments labeling head can be equipped with a variety of pipeline operations.
- Power: 220V, 50Hz, 0.1KW
- Label specifications: L (15 ~ 300) mm x H (15 ~ 130) mm
- Product Specifications: H (20 to 300) mm W (10 ~ 200) mm.
- Labeling speed: 90 /
- Table height: 1000 ~ 1200mm (adjustable)
- Accessories: coders D-1





## STEP MD-100 DISPENSER

Bench manual dispenser for the fast manual application of labels on products of variable shapes

- Label size: min 10 mm; max 90 mm (other measures on demand)
- Vernished aluminium frame
- Electric motoreducer - fixed speed of about 3 mt. per minute
- Power 220 V- 50 Hz.
- Holding-labels coil: internal diameter mm 40 - external diameter mm 250
- Rewinding roller for silicone paper
- Braking brush
- Micro switch for the advancing and stop of labels.



## STEP MD-100 DISPENSER for Round Objects

Bench automatic dispenser for the semi-automatic application of labels on round products with the possibility of inserting a jig for the use as manual dispenser for flat products. Possibility of inserting overprinting groups (dry, hot, typographical).

- Vernished aluminium base
- Motoreducer with speed of about 5 mt. Per minute
- Power 220 v - 50 hz.
- Label-holding coil: internal diameter mm 40 - external diameter mm 250
- Chromium-plated steel roller and rubber roller for the advancing of labels, with fast deblocking
- Braking brush for the tension of the label ribbon
- Cylindrical rolls one of which motorised for the rotation of products
- Plug set in function by an electro-magnet for the descent of rubber roll
- Diameter of the products from mm 20 to mm 100
- Micro switch for the label start
- Micro switch for the label stop



## Label Equipment MANILLA Labels and clips

Products	Item Number	Price per 1000pcs or kg		Description
Manilla Label 60 x 120mm	68009010	Check our webshop		Box of 1000 pcs
Manilla Label 70 x 140mm	68009020	Check our webshop		
Manilla Label 110x220mm	68009200	248 Euro/1000 1.850DKK/1000		
Manilla Clips no. 33. Galvanised	68009133	Check our webshop		Approx. 1000 pcs/kg Price Euro/kg-DKK/kg 5 kg per box
Manilla Clips no. 50. Galvanised	68009150	Check our webshop		Approx. 350 pcs/kg Price Euro/kg-DKK/kg 5 kg per box

## LABELLING MACHINE MOD. 3000/120/15 "Economy"

Labelling machine for the application of labels on flat and round products. It consists of a labelling head to be applied on already existing conveyor. Composed of:

### LABELLING HEAD MOD. 3000/120/15 "Economy"

- Max label width: 110 mm
- Stepper motor, speed from 0 to 15 m/min. (according to label size)
- Power 220 v - 50 hz
- Braking brush to check the tension of label conveyor
- Supply spool (internal diameter 40 mm, external diameter 240 mm)
- Rewinding roll for silicon paper
- Fast deblocking of silicon paper with winding roll
- Photocell for product detection (start)
- Scanning photocell for label stop (stop)
- Possibility of head rotation in order to apply labels on top and on sides of products

### ELECTRONIC CONTROL BOX ET 2000

- Electronic control box – external dimensions mm 200x300x160
- polycarbonate board and red led for reading
- on/off switch for labelling head

#### Functions:

- Speed control: minimum speed settable is 3m/min while the maximum is settable in menu FIXED PARAMETERS (15 m/min for mod. Economy; 30 m/min. For mod. Classic; 60 m/min for mod. Plus)
- Pre-delivery: it represents the status of label pre-delivery from STOP sensor interception (stop delay) for label projection regulation on the peeling blade keeping the label stop photocell position stationary
- Start delay: for programmable delay of label exit start control (useful for centring the label position on the product) in m/sec and in case of encoder use in mm keeping the product detection photocell position stationary
- Production counter: for number of labels delivered
- Pre/end label signal management (upon request)
- Printing exit activation time and thermo regulator for setting the temperature (if the overprinting unit is included)
- Automatic survey of silicon paper breaking without added sensors
- External alarm signal acceptance (in case of emergency)
- Protection fuse
- Chance of setting the ENCODER function, for synchronising the label deliver with the product advancement speed.

### SUPPORT COLUMN

- Wheel for vertical adjustment with fixing lever
- Wheel for horizontal adjustment with fixing lever
- Chromium-plated column with possibility of vertical and horizontal adjustment
- Asymmetrical base with deblocking device and adjustable feet



## LABELLING MACHINE MOD. 3000/150/30 "Classic"

Labelling machine for TOP or SIDE application of labels on products of different shapes. It consists of a labelling head to be applied on already existing conveyor.

### LABELLING HEAD MOD.

#### 3000/150/30 "Classic"

- Stepper motor, speed from 0 to 30 m/min
- Power 220 v - 50 hz
- Braking brush to check the tension of label roll
- Supply spool (internal diameter 40 mm, external diameter 350 mm)
- Rewinding roller for silicone paper
- Fast deblocking of silicone paper with winding roller
- Photocell for product detection (start)
- Adjustable scanning photocell for label stop (stop)
- Possibility of rotation in order to apply labels on top and on sides of products
- Label width: min 10 mm, max 150 mm (support included)

### ELECTRONIC CONTROL

#### BOX ET 2000

- Electronic control box – external dimensions mm 200x300x160
- Polycarbonate board and red led for reading
- On/off switch for labelling head
- Function:
- Speed control: minimum speed settable is 3m/min while the maximum is settable in menu FIXED PARAMETERS (15 m/min for mod. Economy; 30 m/min. For mod. Classic: 60 m/min for mod. Plus)
- Pre-delivery: it represents the status of label pre-delivery from STOP sensor interception (stop delay) for label projection regulation on the peeling blade keeping the label stop photocell position stationary
- Start delay: for programmable delay of label exit start control (useful for centring the label position on the product) in m/sec and in case of encoder use in mm keeping the product detection photocell position stationary
- Production counter: for number of labels delivered
- Pre/end label signal management (upon request)
- Printing exit activation time and thermo regulator for setting the temperature (if the overprinting unit is included)
- Automatic survey of silicon paper breaking without added sensors
- External alarm signal acceptation (in case of emergency)
- Protection fuse
- Chance of setting the ENCODER function, for synchronising the label deliver with the product advancement speed.

### SUPPORT COLUMN WITH BASE

- Wheel for vertical adjustment with fixing lever
- Wheel for horizontal adjustment with fixing lever
- Chromium-plated column with possibility of vertical and horizontal adjustment
- Asymmetrical base with deblocking device and adjustable feet



## LABELLING MACHINE M/3005

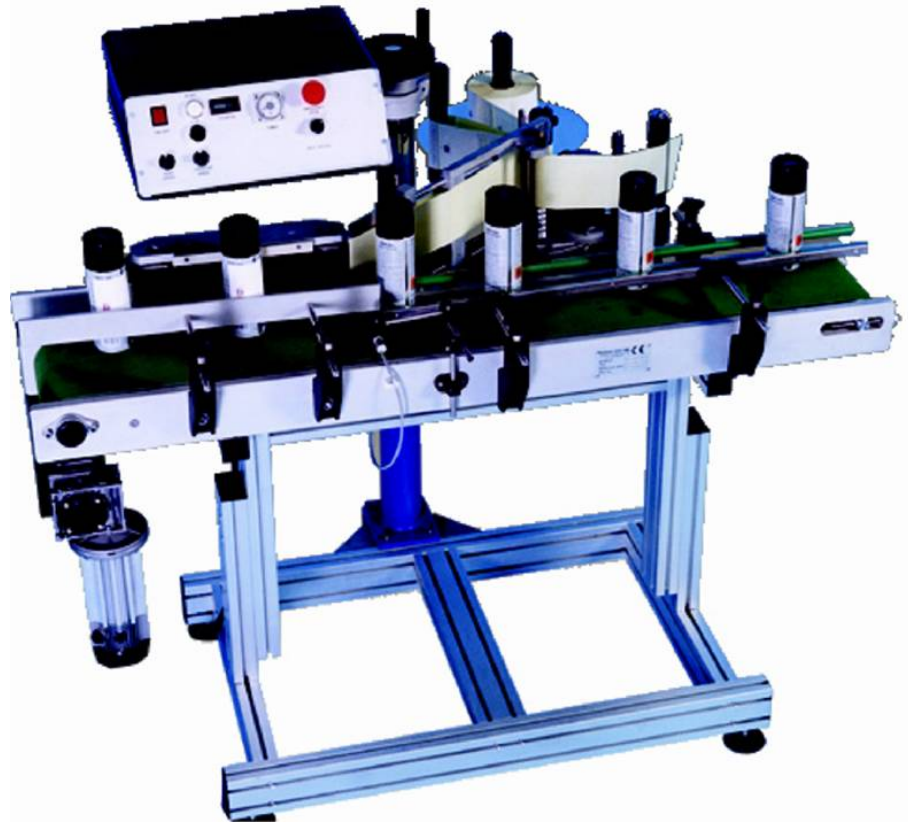
Labelling system for the in-line automatic application of labels on different kinds of products. It consists of:

### CONVEYOR

- Conveyor belt, width mm 120, approx. Length mm 1500 with guides
- Adjustable height from 800 to 900 mm
- Motoreducer with variable speed
- Products guides, adjustable both in height and width
- Base with adjustable feet

### LABELLING HEAD MOD. 3000/150/30 "Classic" WITH BUILT-IN SUPPORT

- Label width: min. 10 mm; max. 150 mm
- Stepper engine, with a speed range from 0 to 30 m/min.
- Power 220 v - 50 hz
- Braking brush to check the tension of label roll
- Label bearing coil with inside diameter of 40 mm and outside diameter of 350 mm
- Rewinding roller for silicone paper
- Fast deblocking for silicone paper with winding roller
- Adjustable scanning photocell or micro switch for label stop
- Photocell for product detection
- Possible rotation in order to apply labels on top and on sides of products



### ELECTRONIC CONTROL BOX ET 2000

- Electronic control box – external dimensions mm 200x300x160
- Polycarbonate board and red led for reading
- On/off switch for labelling head

#### Functions:

- Speed control: minimum speed settable is 3m/min while the maximum is settable in menu FIXED PARAMETERS (15 m/min for mod. Economy; 30 m/min. For mod. Classic: 60 m/min for mod. Plus)
- Pre-delivery: it represents the status of label pre-delivery from STOP sensor interception (stop delay) for label projection regulation on the peeling blade keeping the label stop photocell position stationary
- Start delay: for programmable delay of label exit start control (useful for centring the label position on the product) in m/sec and in case of encoder use in mm keeping the product detection photocell position stationary
- Production counter: for number of labels delivered
- Pre/end label signal management (upon request)
- Printing exit activation time and thermo regulator for setting the temperature (if the overprinting unit is included)
- Automatic survey of silicon paper breaking without added sensors
- External alarm signal acceptance (in case of emergency)
- Protection fuse
- Chance of setting the ENCODER function, for synchronising the label deliver with the product advancement speed.
- **SIDE COUNTER ROLLER** for the rotation of cylindrical products on their vertical axes during the labelling process. Height mm 150, length mm 300. Motorization derived by the conveyor belt.

## LABELLING MACHINE M/3010 DIGIT

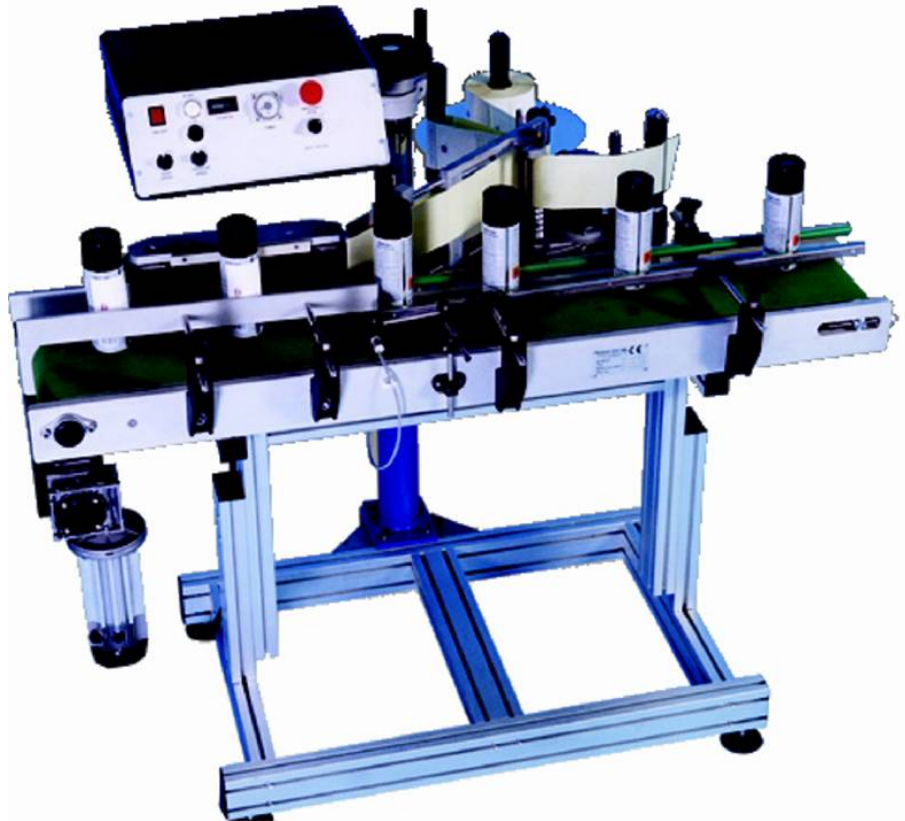
Labelling line for the double automatic application of self-adhesive labels on products of different shapes (**flat, oval, shaped**), composed of:

### CONVEYOR

- Work plane height: mm 800-900
- Plastic conveyor belt, width mm 120, length mm 2000 approx.
- Product guides, adjustable both in height and width
- Base with adjustable feet

### N. 2 LABELLING HEADS MOD. 3000/150/30 CLASSIC WITH BUILT-IN SUPPORT

- Labels width: min. 10 mm; max 150 mm
- Stepper motor, with a speed range from **0 to 30 m/min.**
- Power 220 v - 50 hz
- Braking brush to check the tension of label roll
- Label bearing coil with inside diameter of 40 mm and outside diameter of 350 mm
- Rewinding roller for silicone paper
- Fast deblocking for silicone paper with winding roller
- Microswitch or photocell for label detection (stop)
- Photocell for product detection (start)
- Possibility of rotation in order to apply labels on top or side of products



### DIGITAL CONTROL SWITCHBOARD

- Choice and control of 100 different formats
- Total and partial counter management with preselection
- Hot foil printing selection available
- Adjustable label projection on peeling off blade available
- Fixed stop photocell position
- Adjustable timer available
- Fixed stop photocell position
- Missing label recovery
- Pre end-of-label roll signal management
- Automatic paper-breaking signal
- External alarm signal available
- Possibility to synchronize labelling speed to an external encoder
- **No-motorized side counterroller** for the rotation of the cylindrical products on their vertical axes during the labelling process. Height mm 100, length mm 300.

**Superior stabilizing counterroller** for the synchronized advancing of products with the conveyor belt and their blocking during the labelling process. Width mm 40, length mm 600 (other measures on demand) complete of vertical adjustment of mm 200 (other measures on demand). Motorization derived from conveyor belt (possibility of independent motorization)

**Orbital alignor**, a self-motorised unit with variable speed and adjustment according to products' thickness, composed of two side by side chains which ensure accurate alignment and centering of products that will be blocked by the superior counterroller during the labelling process. The unit is designed to be versatile for the majority of product shapes and sizes and incurs no changeable parts.

## Handheld printers or for inline applications

STEP BT-HH6105 only 450g with 17 languages, LCD touch screen, using as smart phone, fast response when operating, 40 owned patents and global certificate. Able to print Barcode, QR code, Logo, Imaging, Text information on Plastic Bag, Glass Cup, Metal Tube, Carton Box, PVC board. Use by Handheld way and can set on Conveyor.

We have three models of printers

### STEP BT-HH6105B1 Aqueous Printer

Printing materials: carton, wood, gypsum board, fiberboard and other water-absorbing materials

STEP Item number: 42252010

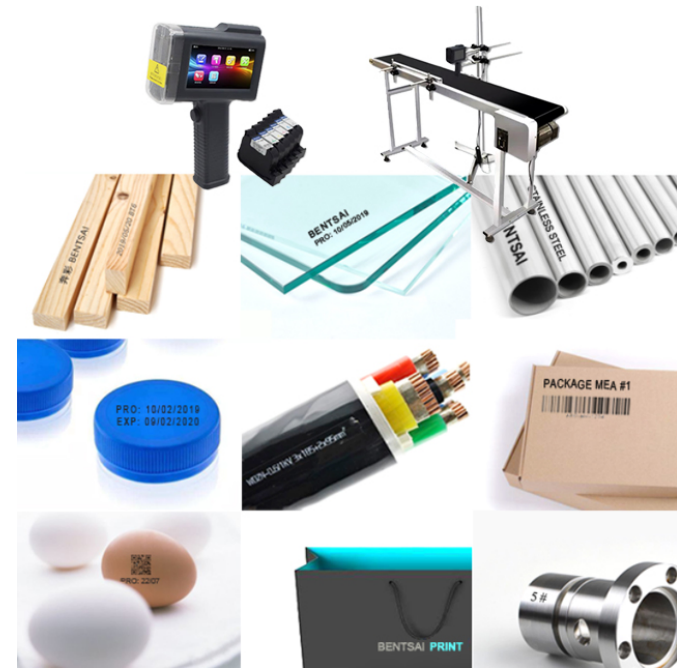
### STEP BT-HH6105B2 Aqueous Identification Printer

1. It can be used in aqueous and solvent cartridges. The machine can recognize cartridges automatically and adjust the optimum printing parameters.

2. Printing material: Carton, wood, plasterboard, fiberboard, plastic, ceramic, metal, aluminum foil and other materials;

STEP Item number: 42252020

### STEP BT-HH6105B4 Coding Printer



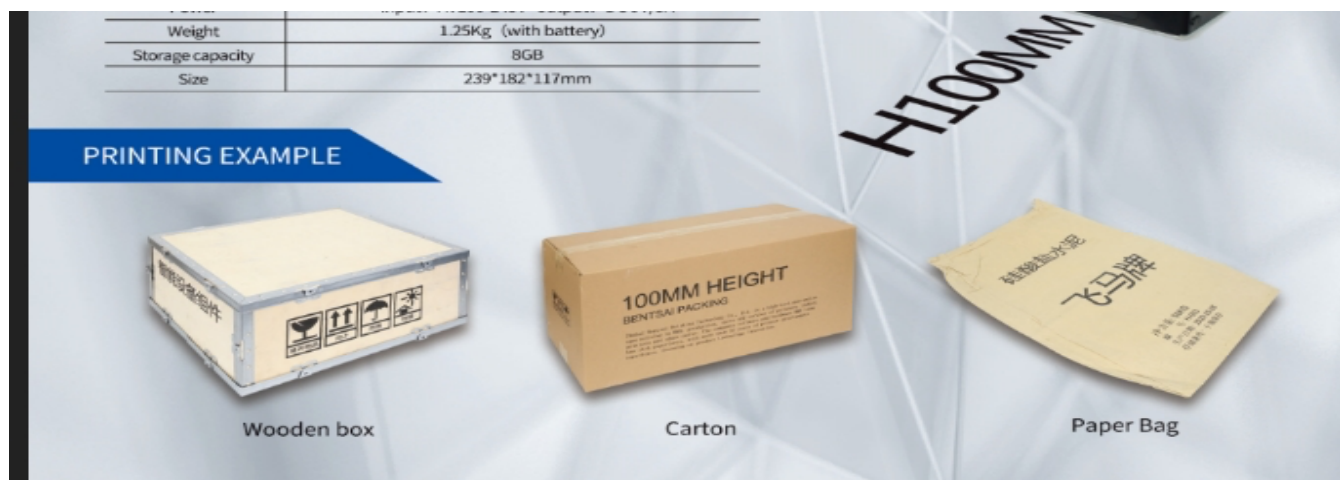
It's the upgrade of B2, and add function as follow: It has the function of importing and exporting the database, and can print the assignment code (variable two-dimensional code, bar code, text).

STEP Item number: 42252030

### STEP B80 Printer

STEP B80 Handheld inkjet Printer 100mm height with 17 languages, LCD touch screen, using as smart phone, fast response when operating, Able to print Barcode, QR code, Logo, Imaging, Text information, marks on wooden, carton, paper etc.

STEP Item no.: 42252070



### STEP B30 Printer

B30 printer 25mm height with 17 languages LCD touch screen, using as smart phone, fast response when operating, 40 owned patents and global certificate. Able to print Barcode, QR code, Logo, Imaging, Text information on Plastic Bag, Glass Cup, Metal Tube, Carton Box, PVC board. Use by Handheld way and can set on Conveyor.

# Handheld and conveyor placed inkjet solutions



**INTELLIGENT HANDHELD PORTABLE INKJET PRINTER**

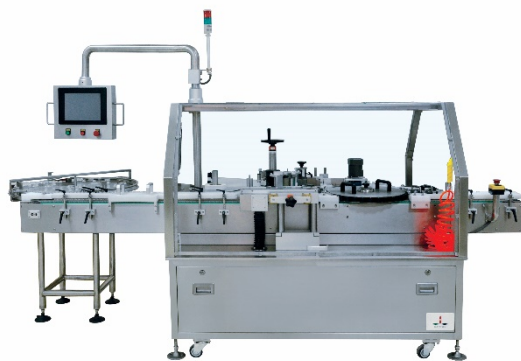
360° omnibearing printing with both of handheld & online.  
Easy Operation, Maintenance Free.  
Fashionable and portable, easy to carry.

**PROFESSIONAL INKJET PRINTING SOLUTION SUPPLIER**

Printing Text, Number, Symbols Dates, Counter, Barcode, QR code, Various data, Various languages...

JC 111113

## High Speed Vial Labeling Machine with turntable



### Specification

- Model No.: STEP SL-183
- Labeling Speed: 600 bottles/Min (Varies according to bottle and label size)
- Labeling Precision:  $\pm 0.5\text{mm}$  (Excluding the error of Bottles and label it self)
- Power and Power Supply: 220VAC 50HZ 1.5KW
- Bottles: Ampoule, Vial
- STEP Item no.:

1	Feeding Screw Bar	1set
2	Flipped Bottle Rejector	1set
3	Chain Conveyor	1set
4	Label dispenser controlled by Schneider Servo Motor	1set
5	Feeding Star Wheel	1set
6	Label Applicator Turn Table	1set
7	Rejecting Turn Table	1set
8	Output Turn Table	1set
9	Rejected Product Collecting Bin	1set
10	Moving Mechanical of Turn Table	1set
11	Touch Screen	1set
12	PLC Electrical Control System	1set
13	Transparent Protection Cover	1set

## Top and Bottom Labeling Machine STEP SL-322

1	Label dispenser controlled by Servo Motor	2 sets
2	Touch Screen	1 piece
3	Electronic Control System	1set
4	Machine Stand	1 set
5	Transformer	1 piece
6	Conveyor	2 pieces





## Tin Cap Labeling Machine STEP SL-332



### Specification:

- Model No.: STEP SL-332
- Labeling Speed: 40-120 pieces / Min (Varies according to Input speed)
- Conveyor Speed: 5-50 Meters/Min
- Labeling Precision:  $\pm 1.5\text{mm}$  (Excluding the error of Bottles and label it self)
- Machine Direction: Left to Right
- Labeling Products: Round Tin Cap
- Dimensions(mm): L4000×W900×H1600 (mm)
- Weight: Approx. 280kg
- Item no.: N

1	Label dispenser controlled by Schneider Servo Motor	1set
2	Cap Feeder	1set
3	Food Grade Main Conveyor	1set
4	Automatic Rejector (including Barcode reader bracket)	1set
5	Stainless Steel Cabinet	1set
6	Touch Screen	1set
7	PLC Electrical Control System	1set
8	Collecting Conveyor	1set
	<b><u>Optional Excluded in the total:</u></b>	
1	UV sterilization	1set
2	Automatic Lift Collecting Device	1set
3	Preserved Position for Laser	1set

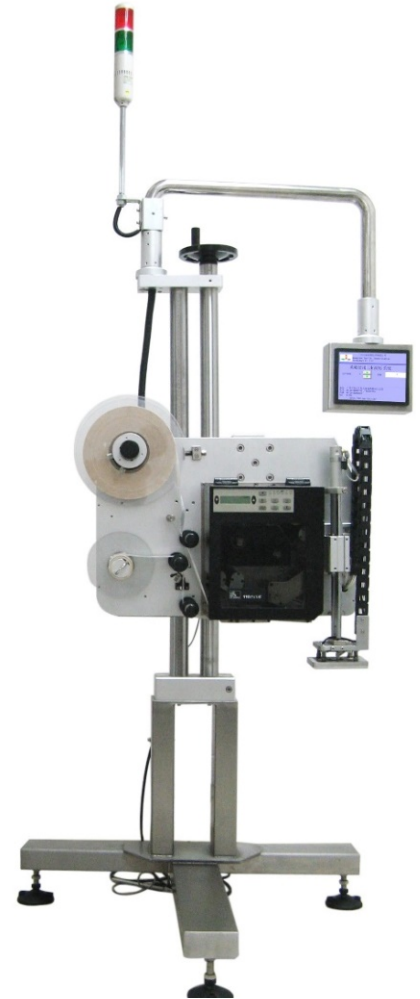
## Print and Apply STEP SL-911TA

Automatic print and placing of lable on outwards packed cartons

### Specification:

- Labeling Position: Top, or Side Or Concave (Extra mechanical may be required with Extra Cost)
- Label Size: Max L200mm×W114mm、 Min L15mm×W20mm
- Printing Content: Character, Date, Batch Code, SN, Pattern, Barcode, 2D Code...
- Printing Pixel: 300dpi
- Printing Speed: 12 inches (305mm) / S
- Print Width: MAX104mm
- Interface: Touch Screen
- Communication Port: RS232 or RS485 or Ethernet
- Power and Power Supply: 220VAC ±5% 50/60Hz
- Compressed Air: 4~6bar
- Dimensions: L1300 mm×W1000 mm×H1600mm(for reference)

1	Zebra ZE500-4 Printing Engine	1set
2	Label Roll Loosen Device	1set
3	PLC Control System	1set
4	Air Driven Mechanical Hand	1set
5	Floor Stand	1set
6	Touch Screen	1set
	<b><u>Optional:</u></b>	
1	Barcode Reader	1set



## Machine Vision Applications



# INSPECTION SYSTEM APPLICATIONS

Machine vision is widely used in pharmaceutical, electronics, packaging, printing, tobacco, daily chemical, construction material, smart card industries and so on. We provide real time online inspection systems with high speed and reliability. Machine vision inspection system can be installed on your lines or on our labeling / packaging machines.



## OCR Inspection

- Read Date, Batch Code and Numbers
- Read & Identify Text



## Read Barcode

- Read Barcode, 2D Code & Text
- Read code printed by Laser, Ink Jet printer and so on.



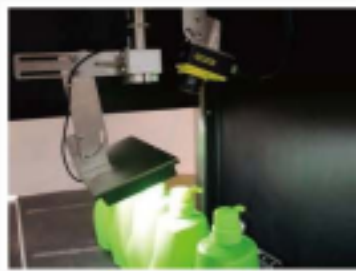
## Read 2D Code

- Read 2D code
- Reject Unqualified Products



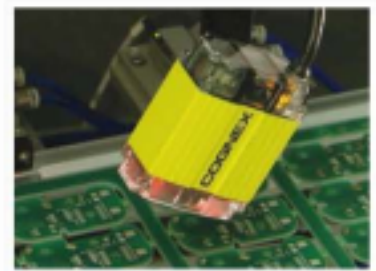
## Inspect Labeling Performance

- Missing Label
- Labeling Position



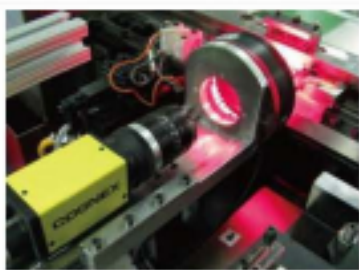
## Inspect Bottle Cap

- Missing Cap
- Reject Unqualified Products
- Sealing of Cap



## Identify Defects

- Identify Product Shape
- Identify Printed Information
- Reject Unqualified Products



## Identify Shape

- Inspect Size
- Measure Size
- Inspect the Product Edge
- Inspect Crack, Dirty Spot



## Automation Application

- Automatic Positioning
- Automation Grab



## Impurity Inspection

- Liquid Level
- Impurity Inside the Bottle