

Sal-Tech Easy Packaging

Automatic Strapping

Machines



STEP TP-6000CE1

Automatic Strapping Machine

Automatic Strapping Machine ideal for the laundry industry. With a standard arch width 850mm and height 600mm.

For 12mm PP strap and Ø200 core.

With core adapter (Item No. TC-075), the machine can use Ø280core strap

| H | W | 850 | 1050 | 1250 | 1450 |
|------|---|----------|----------|----------|----------|
| 400 | | 41100332 | 41100432 | 41100532 | 41100632 |
| 600 | | 41000342 | 41100442 | 41100542 | 41100642 |
| 800 | | 41100352 | 41100452 | 41100552 | 41100652 |
| 1000 | | 41100362 | 41100462 | 41100562 | 41100662 |
| 1200 | | 41100372 | 41100472 | 41100572 | 41100672 |

Standard

STEP TP-6000CE

Contact us for Price

STEP TP-6000CE - For BIG Assignments - Call Us!

Price per 200mm on either width or height add on.
Maximum shoot length must be under 6500mm,
calculation formula: $(2 \times \text{width} + 2 \times \text{Height}) \leq 6500\text{mm}$

Special Price add on if machine is wider than 2250mm. Request price and delivery time. Ask for specification related your products.

Price for base machine when arch add on is:



In the workshop



This machine is
2.650mm x 600mm
Center strap seal point.

Built in DK or carried from producer.
Delivery time:
approx. 4-14 weeks

STEP TP-601CE1

Automatic Strapping Machine

Enhanced Automatic Strapping Machine with arch width 850mm and height 600mm, table height mm.

For 12mm PP strap and ø200 core.

Features

- Speed up to 27 straps per minute
- Equipped with all industry standard features
- Standard Arch size 850x600mm
- For 12 mm straps
- Compact strapping head
- Re shoot of Strap & Zero Loop Eject
- Short Feed Sensor
- Auto Strap Refeed
- Strap End Ejector

Options

- Optional 9 mm Straps
- Stainless Steel Frame
- Retro fit scale
- Wide range of arch size available
- Roller balls in table top for easy rotating of goods for cross strapping

Item No. 41000060

Contact Us for Price

Main Features



Reliable and Robust Strapping Head

Robust mechanism design and high engineering standard ensure excellent durability of the products. Use two proximity switches to replace conventional limit switches.



Auto Strap Ejector

Loop-eject clears unwanted strap automatically if the machine is accidentally activated without a package. Eliminates downtime.



Auto Strap Feeding

Simply insert the strap into the feeding rollers from the coil side of the machine and then push the "reset" button. The machine will automatically feed itself without the need to access to the inside of the machine. Easy strap loading.



Electronic Tension Control

Strap tension can be adjusted accurately by the simple turn of a dial. Easy operation

STEP TP-601DS

Automatic Stainless Steel Strapping Machine

Enhanced Automatic Strapping Machine designed for 8mm to 12mm straps.

Specifically designed for the food industry. Made with high quality stainless steel to meet strict hygiene standards.

SUS 304 Stainless Steel Frame
CE certified

Item No. 41000XXX



| Specifications | |
|-------------------------|-----------------------|
| Strap Width | 8mm – 12mm |
| Strap Thickness | 0.55mm – 0.75mm |
| Strap Tension | 7kg – 70kg |
| Speed per Minute | 29 Straps |
| Table Height | 810mm |
| Net Weight | 220kg |
| Electrical Requirements | Single or Three Phase |

| H W | 850 | 1050 | 1250 | 1450 |
|------|----------|------|------|------|
| 400 | • | • | • | • |
| 600 | Standard | • | • | • |
| 800 | • | • | • | • |
| 1000 | • | • | • | • |
| 1200 | • | • | • | • |

Automatic Vertical Strapping Machines STEP TP-601Y Series

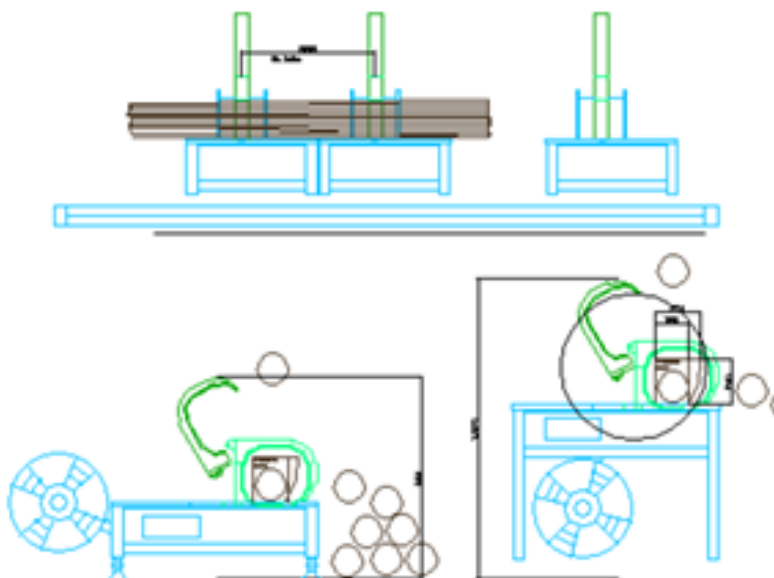


| STEP TP-601Y | STEP TP-601YA |
|---|--|
| Item no.: 41131252 | Item no.: 41132252 |
| Enhanced Automatic Vertical Strapping Machine with Arch width 600mm and height 850mm. Made for 12mm PP strap and ø200 core. Features: <ul style="list-style-type: none"> • Electronic Tension Control • Re shoot of Strap • Automatic Loading of Strap • Electrical Reset Button • Zero Loop Cast Out • Adjustable Table Height | Enhanced Automatic Vertical Strapping Machine with Arch width 600mm and height 850mm. Made for 12mm PP strap and ø200 core. Features: <ul style="list-style-type: none"> • Driven rollers with adjustable speed between 10-40m/min • Electronic Tension Control • Re shoot of Strap • Automatic Loading of Strap • Electrical Reset Button • Zero Loop Cast Out • Adjustable Table Height • Height minimum 480mm |

STEP E3 Strap -22RB Series for PET

Semi Automatic Ring Binder Strapping Machine built on order in accordance with specification.

F.exs. as wood bundles/steel tubes/strap with use of a number of machines. Design layout shown here. For long products, en handling 2 to 10 straps applied divided along the length of the product.



STEP E3 Strap-6000RB Series Automatic Ring Binder Strapping Machine

Automatic Ring Binder Strapping Machine built on order in accordance with specification.

For more information:
Call us: +45 7027 2220
Skype: easy.packaging



STEP TP-601LCE

Low Table Automatic Strapping Machine for heavy packages. The machine comes with a stainless steel model made with high quality stainless steel specifically for the food industry.

Features

- Optional SUS 304 stainless Steel Frame
- CE certified
- Reliable robust strapping head
- Electronic tension control
- Auto strap feeding
- Electronic tension control
- Auto strap ejector (looper)
- Short feed sensor
- Auto strap refeed

| | |
|----------|-----------------|
| 41000310 | Standard |
| 41000320 | Stainless Steel |



| Specifications | |
|-------------------------|-----------------------|
| Strap Width | 8mm – 12mm |
| Strap Thickness | 0.55mm – 0.75mm |
| Strap Tension | 7kg – 70kg |
| Speed per Minute | 29 Straps |
| Table Height | 810mm |
| Net Weight | 220kg |
| Electrical Requirements | Single or Three Phase |

| H | W | 650 | 850 | 1050 | 1250 |
|------|---|-----|----------|------|------|
| 400 | | • | • | • | • |
| 600 | | • | Standard | • | • |
| 800 | | | • | • | • |
| 1000 | | | • | • | • |
| 1200 | | | • | • | • |

STEP TP6000 Ringbinder – Produceret og designet i ordre.

I forbindelse med Hydro Aluminium har vi leveret 1 stk. automatisk omsnøringsmaskine for coils af aluminiumsrør opspolet i ringe, hvor basismaskine er en TP6000 omsnøringsmaskine, med kerne Ø200/W190mm og tilslutning 1x230V-50Hz. Der er foretaget følgende specialopbygning:

Ramme mål tilpasset kundens ønske og ind bygningskrav/layout og de begrænsninger givet heri og med åbning pneumatisk efter hver omsnøring og styring af nyt indskud for PP omsnøringsbånd 12 x 0,55/0,63mm. For indsættelse i ny linie for omsnøring af opspolet. Aluminiums rør, med særlig ramme mål, pool boks opbygning og RHS stativ. Hovedmål af udstyr udgør:

- Brede 500mm, omsnørings punkt i midt heraf.
- Dybde 600mm, omsnørings punkt i midt heraf.
- Højde 700mm

Opbygning på vort værksted samt montage og test. Opbygget med Siemens PLC samt TP 6000 standard styring. Signal udveksling:

- Hydro PLC sætter potential fri signal for strap.
- STEP styring sætter signal for afsluttet omsnøring (ramme åben)



Item no. 41209010

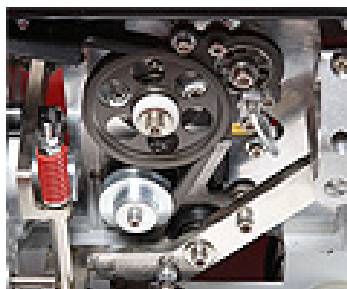
Main Features



Reliable and Robust Strapping Head

The STEP TP-702 uses the latest DC brushless motors technology to provide the highest level of accuracy and reliability on the market. All motors are German-made.

The strapping head has no belts, clutches or pulleys. It is designed with up-to-date technology with few moving parts. With 30% fewer parts, STEP TP-702 requires fewer adjustments, has fewer wear components, and requires less maintenance. The simple design of STEP TP-202 minimizes the maintenance cost.



Free Access to Strap Guides (Patents Registered)

Hinged top plate makes easy access to the strapping head for quick maintenance. Unblock the guides enabling free and quick access to the strap guides without use of any tools. The most maintenance-friendly design.



Waist-High Quick Coil Change (Patents Registered)

Innovative waist-high coil change without access to the bottom of the machine. Quick release lock eliminates downtime to change the coil. Ergonomic and quick change design makes coil change simpler than ever.



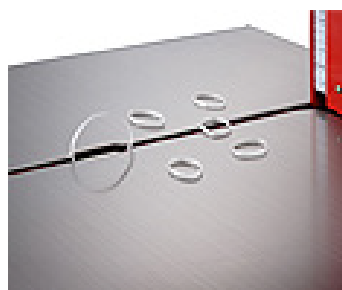
Waist-High Auto Strap Feeding

Friendly design to feed the strap automatically from the upper side of the coil without the need to access to the bottom of the machine.



Turnable Operating Control Panel

The operating control panel is located on upper side of the machine for easy access. User friendly. Power cord located at the top of arch makes the machine very safe to operate and avoid wire damage while moving the machine.



Auto Strap Ejector

Loop-eject clears unwanted strap automatically if the machine is accidentally operated without a package. Eliminates downtime.



Front Foot-Bar Switch

Ergonomic design and user friendly.

Adjustable Table Height

The table height is adjustable to any height between 820 mm and 920 mm



| Model Number / Specifications | STEP TP-702-59 (5 mm, 6mm, 9mm Strap Width) | STEP TP-702-12 (12 mm Strap Width) |
|-------------------------------|--|---------------------------------------|
| Speed Per Minute | 65 Straps | 60 Straps |
| Strap Tension | 1 kg to 32 kg | 1 kg to 45 kg |
| Net Weight | 157 kg | 166 kg |
| Electrical Requirements | Single Phase according to Local Standard | |

STEP TP-702

Automatic Narrow Strap Strapping Machine

Automatic Narrow Strap Strapping Machine with arch width 550mm and height 400mm, table height 870-1020mm. It also come in a fully stainless steel specifically designed for the food industry. Made with high quality stainless steel to meet strict hygiene standards.

Standard for 5mm PP strap and ø200 core.

Features

- Speed up to 65 strap per minute
- Equipped with all industry standard features
- Wide range of standard arches
- Compact Strapping head
- Electronic Tension Control
- Automatic loading of strap
- Electrical reset knob
- For 5, 6, 9 and 12mm PP strap

Options

- SUS 304 stainless steel frame CE certified (STEP TP-702S)
- Photo-Eye Switch
- Rear Foot Bar Switch
- Max. tension up to 45 kg (for 9mm)



STEP TP-702-arch 550x400-5mm

Contact Us for further prices on needed size

Arch Sizes

(for 5mm/6mm/9mm Straps)

| H | W | 550 | 650 | 850 | 1050 | 1250 | 1650 |
|------|---|-----------------|----------|----------|----------|------|------|
| 400 | | 41190125 | | • | | | |
| 500 | | | 41192235 | • | | • | • |
| 600 | | | | • | | | |
| 800 | | | | 41192345 | 41192455 | • | |
| 1000 | | | | | • | • | |

Arch Sizes

(for 12 Straps)

| H | W | 650 | 850 | 1050 | 1250 | 1650 |
|------|---|-----------------|----------|----------|----------|----------|
| 400 | | | 41192312 | | | |
| 500 | | 41192222 | | | | 41192622 |
| 600 | | | 41192332 | 41192432 | 41192532 | |
| 800 | | | 41192342 | 41192442 | 41192542 | |
| 1000 | | | 41192352 | 41192452 | 41192552 | |

- **On Order Basis**

STEP TP-702P

Automatic Strapping Machine

The STEP TP-702P is equipped with dual pneumatic press which better stability to the product being strapped. It is ideal for the graphics industry such as newspaper and magazine bundling.

A specialized stainless steel model (STEP TP-702PS) is available food industry. Made with high quality stainless steel to meet strict standards

Features

- Dual Pneumatic Pres
- Robust and Compact Mechanical Strapping Head
- Waist High Auto strap feeding
- Waist High Quick Coil Change
- Front Foot-Bar Switch

Options

- SUS 304 stainless steel frame CE certified
- Photo-Eye Switch
- Rear Foot Bar Switch
- Max. tension up to 45 kg (for 9mm)

| Specifications: | |
|-------------------------|--|
| Strap Width | 5mm, 6mm, 9mm, 12mm |
| Strap Tension | 1kg to 32kg (5/6/9mm straps) 1kg to 45kg (12mm strap) |
| Speed per Minute | 47 straps (5/6/9mm straps) 44 straps (12mm strap) |
| Net Weight | 227 kg (5/6/9mm straps) 229 kg (12mm strap) |
| Electrical Requirements | Single Phase According to Local Standard |

Item no.: 41193010

Arch Sizes

(for 5mm/6mm/9mm Strap)

| H | W | 650 | 850 | 1050 | 1250 | 1650 |
|-----|----------|-----|-----|------|------|------|
| 500 | Standard | | | | • | • |
| 600 | | | • | | | |
| 800 | | | | • | • | |

- On Order Basis

Main Features

Free Access to Strap Guides (Patents Registered) Unblock the guides enabling free and quick access to the strap guides without the use of any tools.

Dual Pneumatic Press

Offer better product stability and containment.

Waist-High Auto Strap Feeding

User friendly design. Easy strap loading.

Waist-High Quick Coil Change (Patents Registered) Ergonomic and quick change design makes coil change simpler than ever.

Front Foot-Bar Switch

Ergonomic design and user friendly.

Ergonomic Cycle Initiation Easy Access Operating Control Panel



Arch Sizes

(for 5mm/6mm/9mm Strap)

| H | W | 650 | 850 | 1050 | 1250 | 1650 |
|-----|----------|-----|-----|------|------|------|
| 500 | Standard | | | | | • |
| 600 | | | • | | | |
| 800 | | | | • | • | |