

Sal-Tech Easy Packaging Packaging Solutions CONVEYORS



WE KEEP THINGS TOGETHER

**Machines,
and
Materials**



JC 3375 August 2022

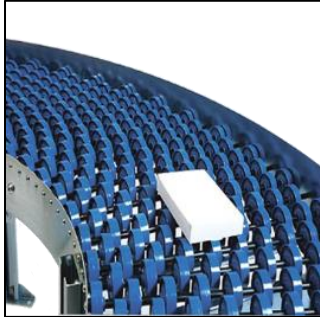


sal-tech.com
EASY PACKAGING

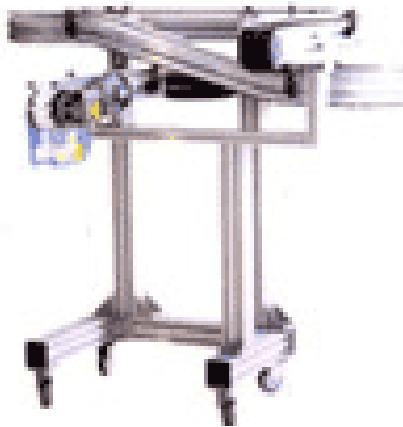
Conveyors

FLEX Conveyors End of Line

CRX400 5 m Item no. 42004000	Roller conveyor up to 3,5/5 m, width 500 mm Height over the floor 580 to 820 mm
CRX300 3,5 m Item no. 42004010	8/6 set of wheels with brake



Conveyors – many types and shapes built to purpose!



BJ-4-3
Z-SHAPED ACCLIVITOUS CONVEYOR



STEP Conveyors – Solution provider – Built to Project

Sal-Tech Easy Packaging offers a wide range of conveyors for wide range of application to meet your demands

Belt Conveyors

STEP LMM-BS01 Stainless Steel Belt Conveyor

The STEP LMM-BS01 is primarily used in the food processing industry. With its stainless steel body, the STEP LMM-BS01 is ideal with aquatic produce. The conveyor belt is made of PVC, PU material. The conveyor build is fully customizable to meet the customer specifications.



STEP Food Belt Conveyor Systems



STEP LMM-FB01 Food Belt Conveyor	STEP LMM-DFB01 Double Food Belt Conveyor
Stainless Steel Body Single Conveyor	Stainless Steel Body Double Conveyor
<p>The STEP LMM-FB01 has a food grade 304 stainless steel body for the food processing industry. The conveyor belt is made of PVC or PU materials. It is also applicable for packaging lines and printing industry. The conveyor build is fully customizable to meet the customer specifications.</p>	<p>The STEP LMM-DFB01 is a conveyor system for food processing industry. It is equipped with two conveyors atop each other to maximize space and effectively improve work efficiency. The conveyor build is fully customizable to meet the customer specifications.</p>

STEP LMM-DBC01 Double Turn Belt Conveyor

The STEP LMM-DBC01 is divided into upper and lower conveyor levels. It is a complimentary cornering conveyor belt for the STEP LMM-DFB01 which saves and maximizes production floor effective space. It is made of carbon steel material body for durability and reliability.



STEP Climbing Type Belt Conveyor Systems



STEP LMM-CBC01 Climbing Belt Conveyor	STEP LMM-CBC02 Climbing Belt Conveyor
Aluminum Frame	Carbon Steel with Paint
<p>The STEP LMM-CBC01 is compact and saves space. It is for easy transporting of products from ground to upper level. It is ideal for the food processing industry.</p>	<p>The STEP LMM-CBC02 is also for transporting products from ground to upper level. Ideal for multi-level production floor setup which makes efficient use of space. It is made with carbon steel body which makes it ideal for chemical and feed processing. It is also applicable for the food processing industry.</p>

STEP LMM-PBC01 PVC Belt Conveyor



Made with light aluminum frames and is suitable for electronics and light production industry. The conveyor build is fully customizable to meet the customer specifications.

STEP LMM-LBC01 Logistics Sort Belt Conveyor

The STEP LMM-LBC01 is a logistics sorting belt conveyor ideal for postal and logistics application. It is made with carbon steel with lacquer finishing for durability as well as aesthetics. It has a wear-resisting rubber belt according to customer specifications and can be customized into different design styles to meet desired function.



STEP Work Tables for Production Lines



STEP MM-BWT01 Belt Work Table	STEP LMM-PWT01 PVC Work Table
Aluminum Profile	Carbon Steel with Paint
<p>The STEP MM-BWT01 is a conveyor system for assembly line production setup. Ideal for electronics, toys and other assembly type productions. Optional fluorescent tubes, tracheal interface, power supply and other essential components.</p>	<p>The STEP LMM-PWT01 is made of light-weight aluminum alloy frame which makes it light and easy to install. It is suitable for electronic, small home appliance and other similar assembly productions.</p>

STEP Round Belt Conveyors for Corners

STEP LMM-90DR01 90 Degrees Round Belt Conveyor

The STEP LMM-90DR01 is a cornering belt conveyor used for redirecting the flow of products. It is for 90 degrees redirect.

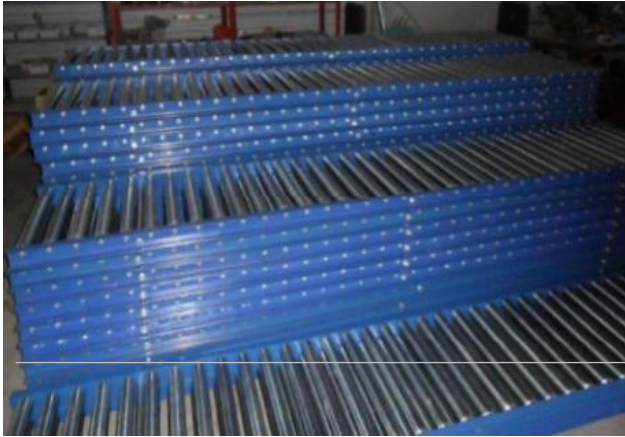


STEP LMM-180DR01 180 Degrees Round Belt Conveyor



The STEP LMM-180DR01 is a 180 degrees cornering belt conveyor used for redirecting the flow of products. It is made with stainless steel which makes it ideal for food production. It can complete production line of reverse operation and can maximize the use of production space.

Roller Conveyors



STEP Roller Conveyor

The STEP Roller Type conveyor is primarily used in, but not limited to, packaging lines for easy transport of products. It is made with Carbon Steel and painted for added durability. The free rollers enable framework height adjustment and customers can specify conveyor dimensions to meet functionality demands.

STEP LMM-SFC01 Skate Wheel Flexible Conveyor

The STEP LMM-SFC01 is a flexible skate wheel conveyor which is ideal for complex production layout. It has optional plastic blessing to wheel or a carbon steel galvanization to wheel to suit various environments. It is made of carbon steel with zinc for added durability and reliability.

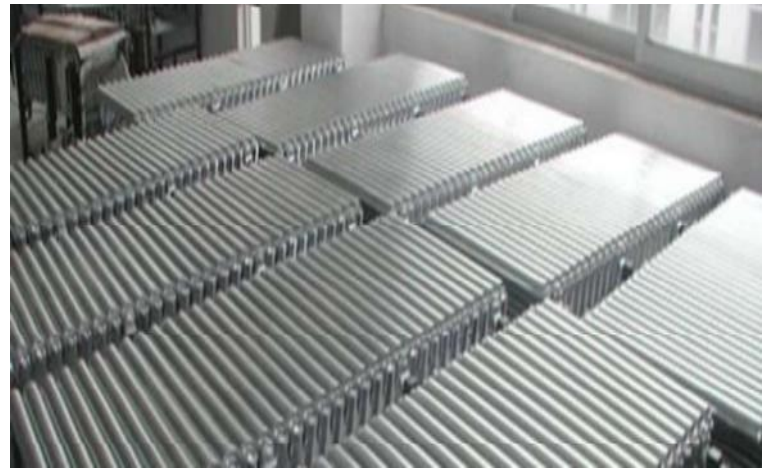


STEP LMM-90DRC01 90 Degrees Free Roller Conveyor

The STEP LMM-90DRC01 is made of Carbon Steel and painted for added durability. The free cone roller structure ensures the position of items to avoid it falling over the conveyor. It is highly customizable according to the customer specifications to meeting the production demand.

STEP LMM-FRC01 Free Flexible Roller Conveyor

The STEP LMM-FRC01 is a free flexible roller type conveyor. It is suitable for complex layouts and is easy to incorporate to existing lines. It is made of Carbon Steel with zinc for added durability.



STEP LMM-FAL01 Free Roller Assembly Line

It is made of aluminum, the STEP LMM-FAL01 is ideal for auto production, electronic products and other similar items. It is customizable according to customer specification and has optional power supply, fans and other necessities for productions.

STEP Conveyor Lines



<p>STEP LMM-RCL01 Roller Conveyor Line</p>	<p>STEP LMM-PRC01 Power Flexible Roller Conveyor</p>
<p>Carbon Steel</p>	<p>Carbon Steel with Paint</p>
<p>The STEP LMM-RCL01 is a conveyor system ideal for transporting goods and other products. It is applicable to wide variety of functions, like product transport system for production lines and packaging lines.</p>	<p>The STEP LMM-PRC01 is equipped with a miniature motor and every unit has a standard length of 1 meter which is customizable to customer preference and specification. Ideal as transport conveyor for postal services.</p>

Chain Board Conveyors



STEP LMM-CS01 Stainless Steel Chain Board Conveyor

The STEP LMM-CS01 is a conveyor system for transporting products within the production line. It is ideal for the food and beverage production.

STEP LMM-MCC01 Steel Chain Conveyor

The STEP LMM-MCC01 is ideal for the food and beverage production. It utilizes steel chains to transport products within production lines.

STEP LMM-TCC01 Take Baffle Climbing Conveyor

The STEP LMM-TCC01 is a multi-level transport conveyor and is made of stainless steel which makes it ideal for transporting food produce like beans, grains and other similar products. It is also applicable to other functionalities depending on customer.



STEP LMM-TSC01 Times Speed Chain Conveyor



The STEP LMM-TSC01 is a transport conveyor system with customizable transport speed. Customizable according to customer specification to meet the production demands. It is ideal with most production line as a transporting conveyor to complete complex lines.

STEP Rollers

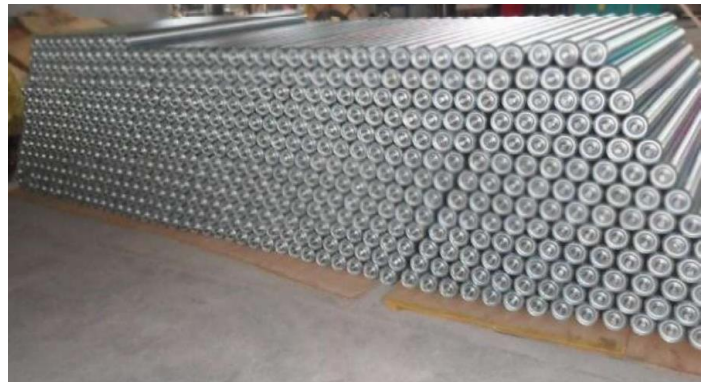
STEP LMM-RC01 Machining the Rollers

It is made with carbon steel with zinc for durability and reliability. The STEP LMM-RC01 has dimensions of 30mm roller diameter and 12mm shaft diameter.



STEP LMM-SR01 Small Rollers

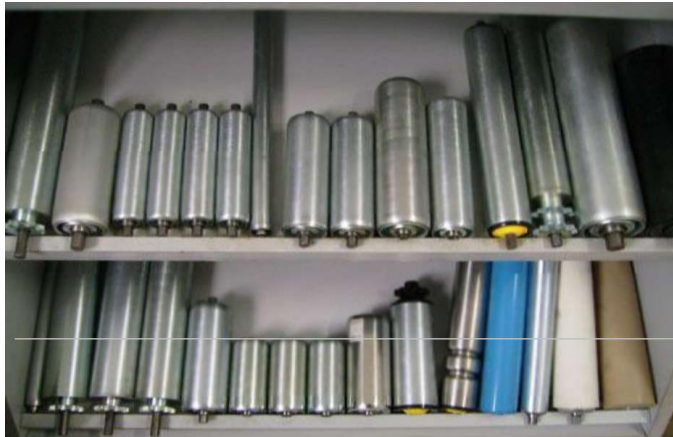
The STEP LMM-SR01 is made of carbon steel with zinc which gives it strength for added durability. It can be produced to as small as 50mm or even less depending on specification.



STEP LMM-FRS01

Free Roller with Spring Shaft

Available in various pipe diameters and trunnion and can be customized according to customer specifications.



STEP LMM-VSR01

Highly Customizable Rollers

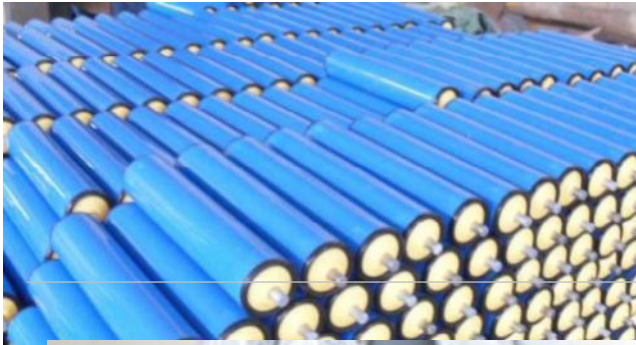
Steel rollers available in various specifications and according to customer demands.

STEP LMM-SPR01

Stainless Steel Rollers with PVC Bearing House

The STEP LMM-SPR01 has a PVC bearing house which is high precision, low tolerance.





STEP LMM-RP01 PVC Roller

The STEP LMM-RP01 is made of PVC plastic which is ideal for electronic production, aquatic produce and textile industry. It is available in wide variety of roller dimensions and specifications according to customer demands.

STEP Rubber Coated Electric Rollers

The roller has a rubber coating for added friction and minimizes static. It is ideal for production of electrical components and other sensitive products.



Trough Idlers



STEP LMM-BI01 Belt Idler

The STEP LMM-BI01 is made of carbon steel coated with paint. It is also available in stainless steel and HDPE materials for various applications. It is commonly used in mining machinery belt conveyors for material transportation links.



STEP LMM-RI Return Idler

The STEP LMM-RI is made of carbon steel coated with paint. It is customizable to meet customer specifications and demands.

STEP HDPE Idler

It is made with HDPE material. It is commonly used in mining machinery belt conveyors for material transportation links.



STEP Idler Group

The STEP Idler Group is made of carbon steel coated with paint. It applies to all kinds of belt conveyor width. It is customizable to meet customer specifications and demands.



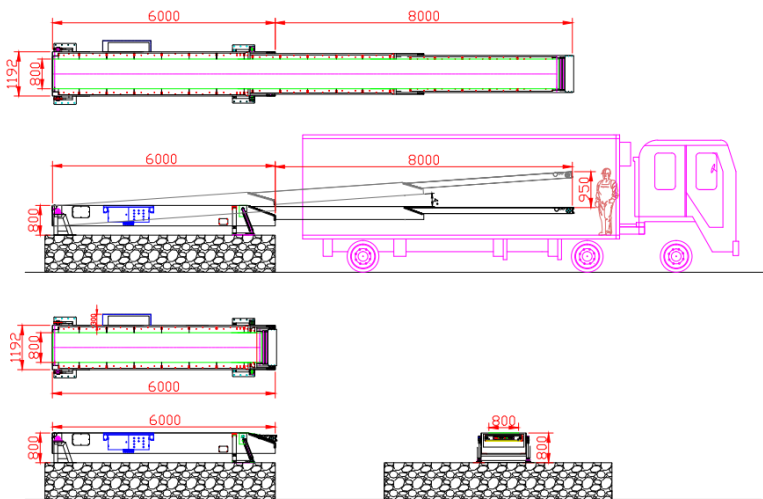
STEP Telescopic Belt Conveyors for loading & unloading trucks and/or containers

The Ergonomic and fast way to load and unload your boxes and cartons when pallets are not directly used within the shipment.



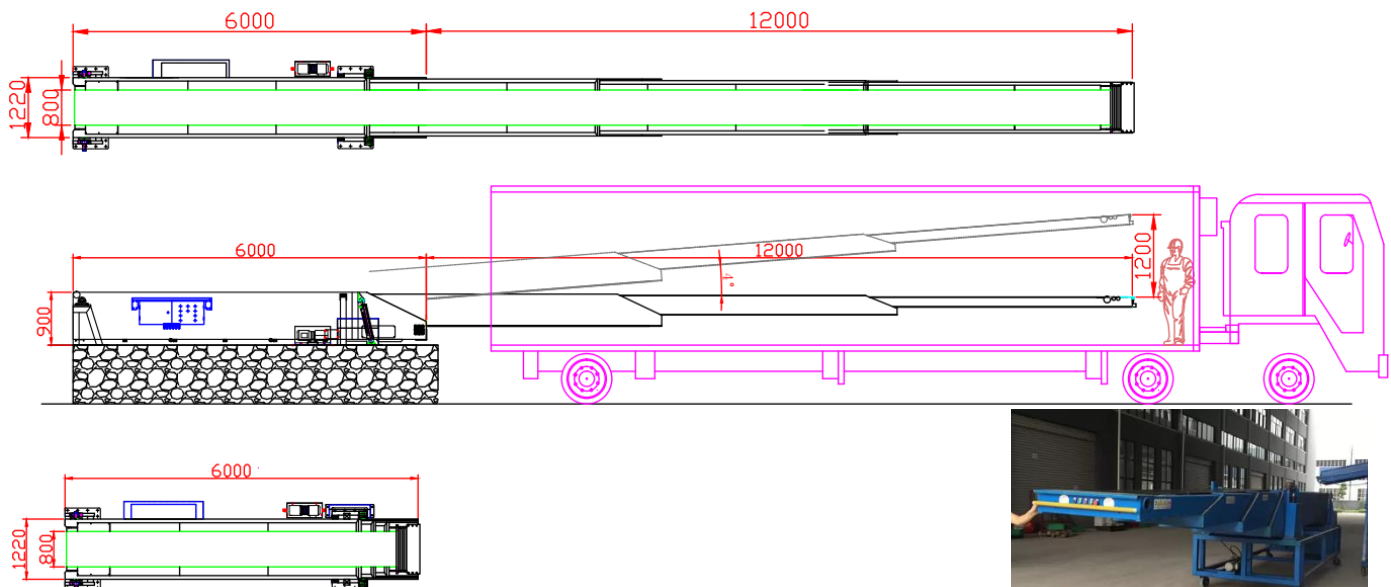
General Specification:

- Base Length: 4500/6000mm
- Extension: 6/8/12/14meters
- Total length 10,5/14/18/21meters
- Belt width: 600/800mm
- Belt speed: 15-30m/min
- Boom speed: Max 12m/min.
- Max load: 50kg/m



- STEP TBC Models Options:**
- Initial dip nose inlet conveyor
 - Robot pick up and load to conveyor
 - Scanner functions
 - Imaging functions
 - Sorting system
 - Palletizing
 - Un palletizing

STEP Item no	Base length	Extended length	Total Length	Belt Height min.	Max load
47301010	4.500mm	6meter	10.5meter	750mm	50kg/m
47301020	6.000mm	8meter	14meter	750mm	50kg/m
47301030	6.000mm	12meter	18meter	800mm	50kg/m
47301040	7.000mm	14meter	21meter	800mm	50kg/m



STEP HW 2001 Series Scissor lift

STEP HW 2001

Stationary Electric Lift Table, can be used in above-floor or in-floor pit applications. Heavy duty cylinders with drainage system and check valve to stop the lift table lowering in case of hose burst, a device that employs a scissors mechanism to raise or lower goods and/or persons. Typically lift tables are used to raise large, heavy loads through relatively small distances. Common applications include pallet handling, vehicle loading and work positioning.

Features:

- Upper platform lifted with aluminum safety bar preventing descent on contact with obstructions.
- Low-tension(24V) control box with up-down buttons.
- Internal power pack equipped with relief valve against overloading and compensated flow valve for controlled lowering speed.
- Safety clearance between scissors to prevent trapping during operation.
- Self-lubricating bushings on pivot points.
- Removable lifting eye to facilitate handling and lift table installation.
- High quality AC power packs are made in Europe.

Specifications	
Model	HW2001
Capacity	2000 Kg
Lowered Height	230mm
Raised Height	1050mm
Platform Size	850 x 1300mm
Base Frame Size	785 x 1220mm
Lift Time	20-25 sec.
Power Pack	380v/50HZ, AC 2.2kw
Net Weight	235 Kg
STEP Item No.	47521040



Optional Accessories:

- Trolley Frame
- Loading Flap
- Recessed Circular Turntable
- Pallet Truck Frame
- Side Barrier Rails
- Raise and Tilt Platform
- Roller Bed
- Protection Curtain

Large range of lifting tables on request to solve most applications.

STEP Gravity Roller Conveyor for Unloading

Gravity feed telescopic roller conveyor is a simple arrangement of several sections of gravity roller tracks. It is the most economic helpful solution for loading and unloading goods in warehouses.

This gravity conveyor is a development of the highly successful telescopic design mounted on a large robust box section chassis with an adjustable platform which suits most tailboard heights, fully welded steel construction giving stability & strength.

Intended for off-loading only without the need of a loading dock, the telescopic can be used in conjunction with other conveyor from our extensive range to reach all areas of the warehouse.

Features:

- Suitable for loading all kinds of vehicles - trucks, trailers, vans, containers, wagons & aeroplanes.
- Suitable for all unit loads - cartons, packages, bags, crates, etc.
- Length of the conveyor can be varied as the vehicle fills up or empties out.
- Low inertia 50mm diameter PVC rollers set at 75mm centers allows transportation small & large parcels
- Each deck of track is independently height adjustable by means of a screw jack allowing correct gravity fall
- Smooth transfer between decks is achieved by a series of 38mm diameter steel rollers within a transfer slider section
- Flexible Gravity Double PVC Roller Conveyor Adjustable Height 900 – 1450mm



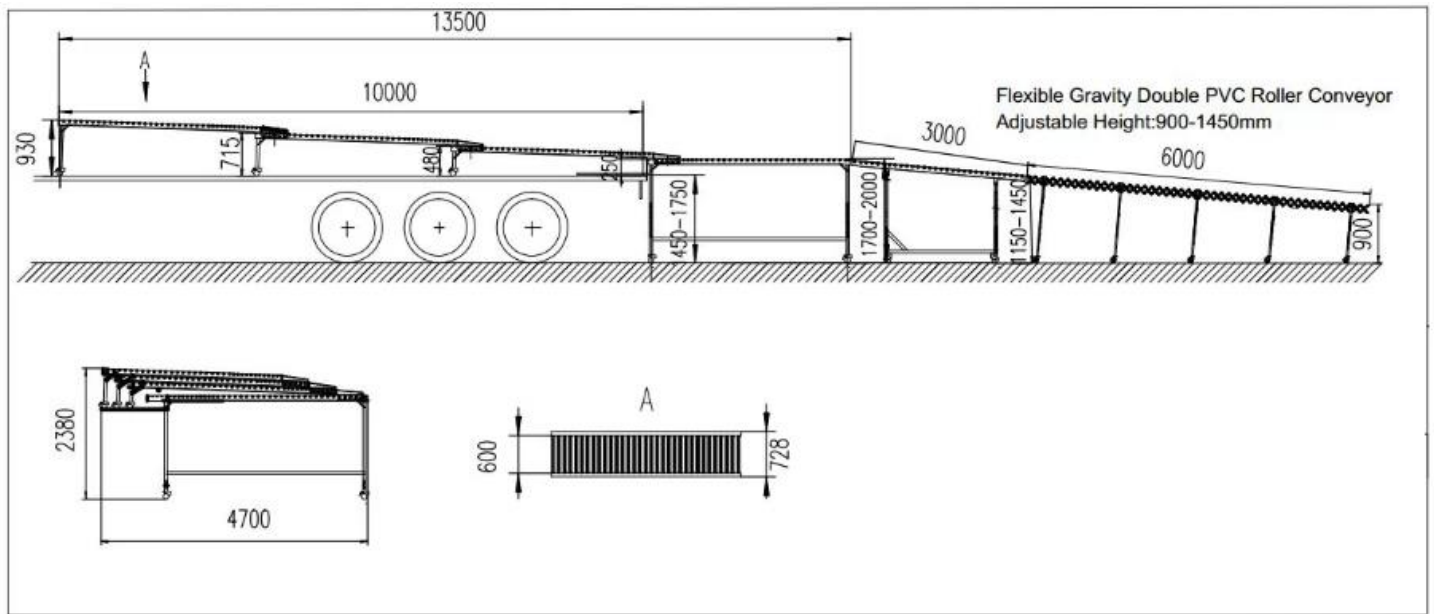
Options:

- Flex roller conveyor 1,5 to 6,0 meters

Applications:

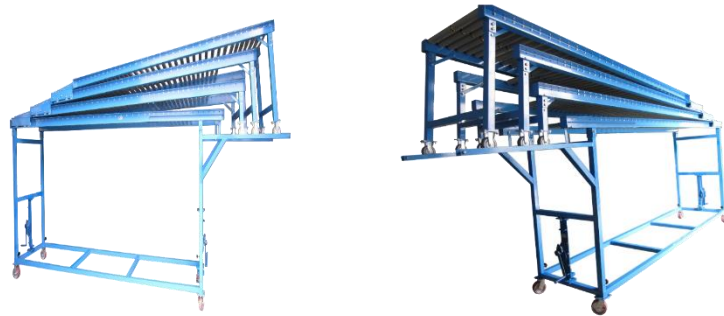
- Warehouse/distribution centres, manufacturing and logistics companies.





Option:

- Flexible roller conveyor 1,5 to 6,0 meters



Specifications		
Width	600mm Width	800mm Width
Description		
Open Length	13.500mm	13.500mm
Close Length	4700mm	4700mm
Effective Width	600mm	800mm
Load Height in Vehicle	250-930mm	250-930mm
Discharge Height outside Vehicle	1450-1750mm	1450-1750mm
Vehicle Height	1250-1600mm	1250-1600mm
STEP item no.		
Telescopic 13.500xWidth conveyor	47302010-600	47302010-800
Inclined roller conveyor 3.000mm	47302020-600	47302020-800
Flexible roller Conveyor 1.500-6.000mm length	47302030-600	47302030-800



Flexible roller Conveyor 47302030



Inclined Roller Conveyor 47302020

STEP Conveyor Flat Top – Addaptable for projects

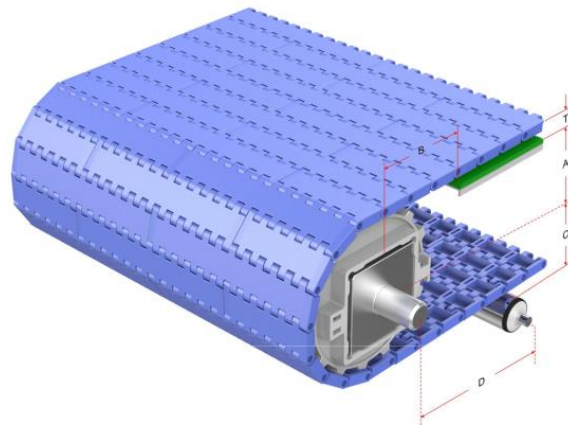
This modular conveyor segments/belt are made of Acetal material and are easier to wash, as well as more resistant to sharp and abrasive materials. This is well-suited to applications that involve travelling around corners. In fact, they can travel straight, go around a corner, and incline and decline using a single belt and the same motor all throughout. Easy to Clean and spacing between plastic segments are adjustable.



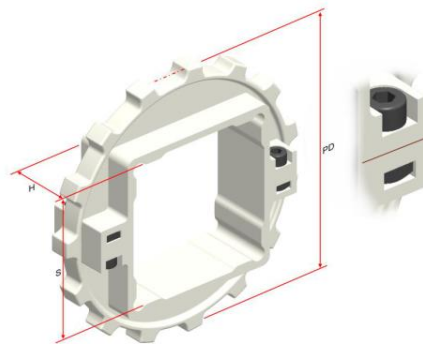
Applications:



Specifications	
Product Name	STEP Conveyor Flat Top 1000x1500mm H320-400mm
Width	1000mm
Length	1500mm
Height	320-400mm adjustable
Belt Material	Acetal FDA approved
Temperature	-40 to 80C
Electrical Connection	To be specified per agreed on project
Item No.	47211000-1500 Width: 1000mm x 1500mm Length
	47211300-1400 Width: 1300mm x 1400mm Length



Conveyor Frame Dimensions					Unit : mm
No. Teeth	A (Min.)	B (Min.)	C (Max.)	D (Min.)	T
10	35.6	50	35.2	200	8.8
12 / 12-Split	43.95	58.35	43.55	200	
15 / 15-Split	56.25	70.65	55.85	200	
18 / 18-Split	68.6	83	68.2	200	
19-Split	72.85	87.25	72.45	200	
24-Split	92.6	107	92.2	250	



Sprocket Dimensions			Unit: mm		
No. Teeth	PD	S	D	H	K
10	80	--	25.2	25	8X8
12	96.7	38.5/40.5	25.4/38.1	25	8X8
12-Split	96.7	38.5/40.5	38.1	25	9.52X4.76
15	121.3	38.2/40.2/50.2/60.2/63.5	35.5/50.2	29.5	8*8
15-Split	121.3	38.5/40.5/50.5/60.5/63.5/65.5	--	33	--
18	146	38.5/40.5/45.5/50.5/60.5	25.4/50.2	25	14X4
18-Split	146	38.5/60.5	50.8	35	14X5
19-Split	154.5	38.5/40.5/50.5/60.5/65.5	--	35	--
24-Split	194	60.5/65.5	--	52	--

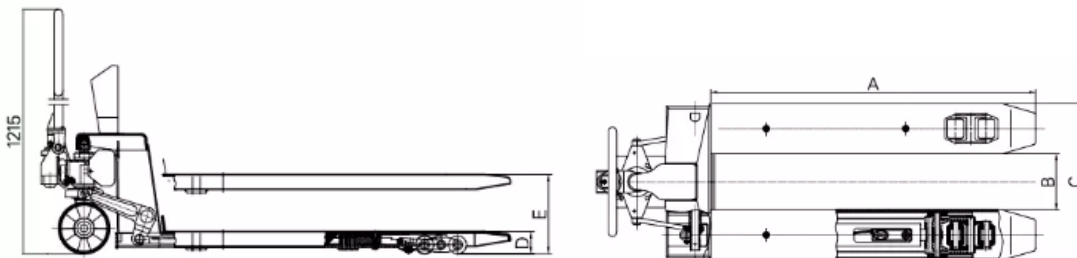
STEP Pallet wagon with Scale 2Tons



Wheel



Load Cell



Floor scales, platform scales suitable for all kinds weighing

Platform size:1000mmX1000mm 1200mmX1200mm 1500mmX1500mm 1200mmX1500mm

1500mmX2000mm or any customs size,

Capacity from 500-5000kg. 2 Tons

FEATURES:

- With Oil pressure activated lifting device
- Wheels: Polyurethane or steel
- Saves Time and Space

Item no.: 48177010