

Sal-Tech Easy Packaging Packaging Solutions Bag Closing Mechanical



WE KEEP THINGS TOGETHER

**Machines,
and
Materials**



JC 3371 STEP Catalog Bag Closing Mechanical
June 2023



sal-tech.com
EASY PACKAGING

Sack and Bag Closing Tools

Sewing Machine

STEP SK26-1A

Model:	Bag Closing Machine
Thread:	1
Needle:	DN*1 25#
Needle Gauge:	6.5mm
Max. Sewing Speed:	1250rpm
Voltage:	230V
Net weight	6kgs
Item no.:	42811010



Thread for sewing machine

150 rolls per box, 200gr/roll

Item no.: 56000200	2/3 type
Item no.: 56000210	3/3 type

6 rolls per box, 5,83kg/roll

Item no. 56000220	2/3 type
-------------------	----------



Options for STEP SK26-1a sewing machine

Hanger kit for STEP SK26-1a

Item no. 42811030

STAND for table top mounting STEP SK26-1A

making it easy to close smaller bags

Item no. 42811200

Foot switch with STEP SK26-1A, when using stand and 2 hands need to be free.

Item no.: 42811210

Spring Balancer for Sewing machine 5-7kgs

Item no.: 47609000



Bag closer Battery type STEP-SK36-44



Item no.: 42811100

STEP YH-2502K**Heavy-duty Carpet Overedging Machine (Right hand)**

Thread: 2
 Needle: 7713 230/200
 Stitch: 1-10
 Sew Pieces: 12
 Max. Sewing Speed: 3000 rpm
 Net weight: 38kgs
 Item no.: 42827010

**STEP YH-2503N****Heavy-duty carpet overedging machine(New patent stitch adjusting device)**

Thread: 3
 Needle: 7713 230/200
 Stitch: 1-10
 Sew Pieces: 12
 Max. Sewing Speed: 3000 rpm
 Net weight: 38kgs
 Item no.: 42827030

**STEP N600A****Bag Closing Machine (1 Thread)**

Thread: 1
 Needle: DN x 1 #25
 Stitch: 7.2mm (8.2mm)
 Max. Sewing Speed: 1600-1800rpm
 Speed: 250-350 bags/hr
 Net weight: 6.1 kgs
 Cutter: Automatic Thread Cutter
 Item no.: 42822010

Motor: 90W 50/60Hz, 1PH/12V, 24V, 110V, 115V, 220V, 230V or 240V
 (Please specify when order)

STEP N602A**Bag Closing Machine (2 Thread)**

Thread: 2
 Else as: STEP N600A
 Item no.: 42822020



STEP N600AC**Bag Closing Machine (1 Thread) (Equipped Taping attachment)**

Thread: 1
 Needle: DN x 1 #25
 Stitch: 7.2mm
 Max. Sewing Speed: 1600-1800rpm
 Speed: 250-350 bags/hr
 Net weight: 8 kgs
 Cutter: Automatic Thread Cutter
 Item no.: 42822040

Motor: 90W 50/60Hz, 1PH/12V, 24V, 110V, 115V, 220V, 230V or 240V
 (Please specify when order)

**STEP N602AC**

Thread: 2
 Else as: STEP N600AC
 Item no.: 42822050

STEP N320A**Bag Close For Heavy Use (2 Thread)**

Thread: 2
 Needle: DN x 1 #25
 Stitch: 8.5mm
 Max. Sewing Speed: 1600-1800rpm
 Speed: 160-230 bags/hr
 Net weight: 7 kgs
 Cutter: Automatic Thread Cutter
 Item no.: 42822060

Motor: 90W 50/60Hz, 1PH/12V, 24V, 110V, 115V, 220V, 230V or 240V
 (Please specify when order)

**STEP F300A****Bag Closing Machine (1 Thread)**

Thread: 1
 Needle: FD-5 #24, 25
 Stitch: 7.2mm
 Max. Sewing Speed: 1600-1800rpm
 Speed: 300-400 bags/hr
 Net weight: 7.7 kgs
 Cutter: Automatic Thread Cutter
 Item no.: 42822070

Motor: 90W 50/60Hz, 1PH/12V, 24V, 110V, 115V, 220V, 230V or 240V
 (Please specify when order)

**STEP F302A****Bag Closing Machine (2 Thread)**

Thread: 2
 Else as: STEP F300A
 Item no.: 42822080

STEP F900A

High Speed 1-needle 2-thread Bag Closing Machine
with automatic Lubrication System

Material Thickness:	8mm
Stitch:	7-12 mm
Stitch Type:	1-needle 2-thread
Max. Sewing Speed:	2600-2800rpm
Speed:	80 feet (2438 cm) / per min.
Cutter type:	Guillotine Style
Closure type:	Standard Sew
Net weight:	29 kgs
Item no.:	42825010



STEP F920A & F920AC

High Speed Bag Closer (2-needle, 4-thread)

Material thickness:	8mm	
Stitch:	7~12 mm	
Stitch type:	2-needle 4-thread Chain stitch	
Cutter Type:	Guillotine	Auto scissors
Closing Type:	Standard	Standard / Tape
Tape Cutter:	-	Auto Scissors
Air Pressure:	-	4 kg/cm ²
Air Consumption:	-	3.5 N/min.
N.W.:	30 kg	34 kg
G.W.:	31 kg	35 kg
Item no.:		



STEP N980A

High Speed 1-needle 2-thread Bag Closing Machine
with automatic Lubrication System (for plain sew)

Material Thickness:	8mm
Stitch:	7-11.5 mm
Stitch Type:	1-needle 2-thread
Max. Sewing Speed:	2600-2800rpm
Cutter type:	Plain only
Closure type:	Mechanical Thread Cutter
Net weight:	42 kgs
Item no.:	42825030



STEP FN600A

Sliding Board Closing Machine (1 Thread)

Thread:	1
Needle:	DN x 1 #25
Stitch:	7.2 mm
Speed:	200-300 bags/hr
Net weight:	50 kgs
Cutter:	Automatic Thread Cutter
Item no.:	42826010

Motor: 90W 50/60Hz, 1PH/12V, 24V, 110V, 115V, 220V, 230V or 240V
(Please specify when order)



STEP FB-N980A

Sliding Board Closing Machine

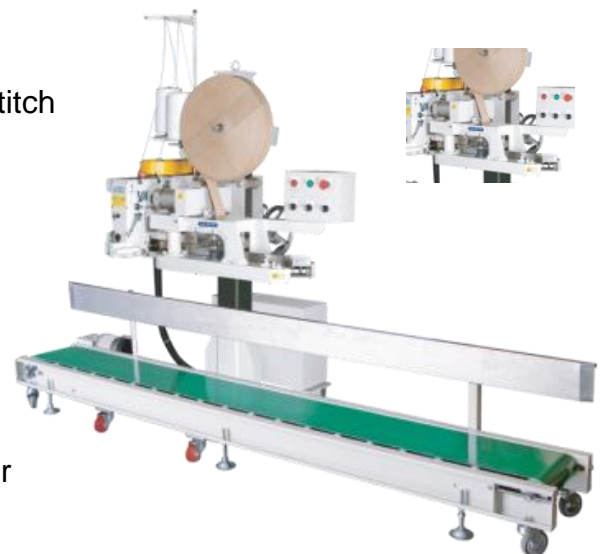
Needle:	DR x 2 #26
Stitch:	7-11 mm
Stitch type:	Double Thread Chain Stitch
Capacity:	200-300 bags/hr
Material Thickness:	8mm
Machine Head Model:	N980A
Length x width x height:	1180 x 830 x 2200 mm
Height Adjustment range:	290-750 mm
Tape Cutting:	Auto thread Cutting
Motor Required:	220V/340V/ 1/3HP
Lubrication:	Auto-Lubrication
Net weight:	175 kgs
Cutter:	Automatic Thread Cutter
Item no.:	42826020



STEP FACC-N980AC

Automatic Bag Closing with Conveyer

Needle:	DR x 2 #26
Stitch:	7-11 mm
Stitch type:	Double Thread Chain Stitch
Capacity:	500-600 bags/hr
Material Thickness:	8mm
Machine Head Model:	N980AC
Length x width x height:	132 x 122 x 193 cm
Height Adjustment range:	720-1200 mm
Tape Cutting:	Auto thread Cutting
Motor Required:	3PH/220V/ 1/2HP
Lubrication:	Auto-Lubrication
Net weight:	224 kgs
Cutter:	Automatic Thread Cutter
ON/OFF	
Working operation:	Photoelectric control
Item no.:	42826030



STEP GK35-6A w. Column & Auto folding Aggregate

Standard version or Stainless Steel Semi Wash Down Version

Automatic single needle machine for plain closing of all kinds of filled bags. The machine will start automatically by photo switch actuated by the bag being fed into the machine.

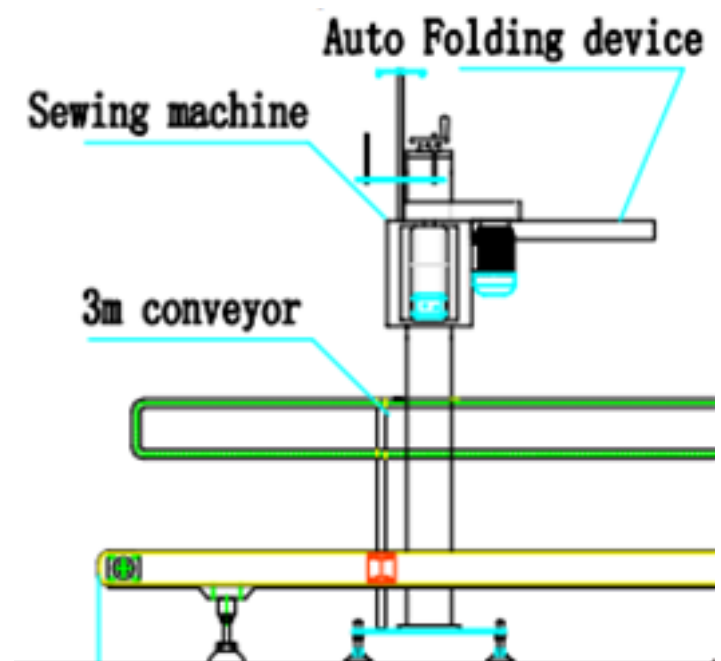
In the same way, the machine stops after the bag passes through, and at the same time the thread/crepe-tape is cut automatically by built-in air cylinder operated guillotine type cutter.

Application:

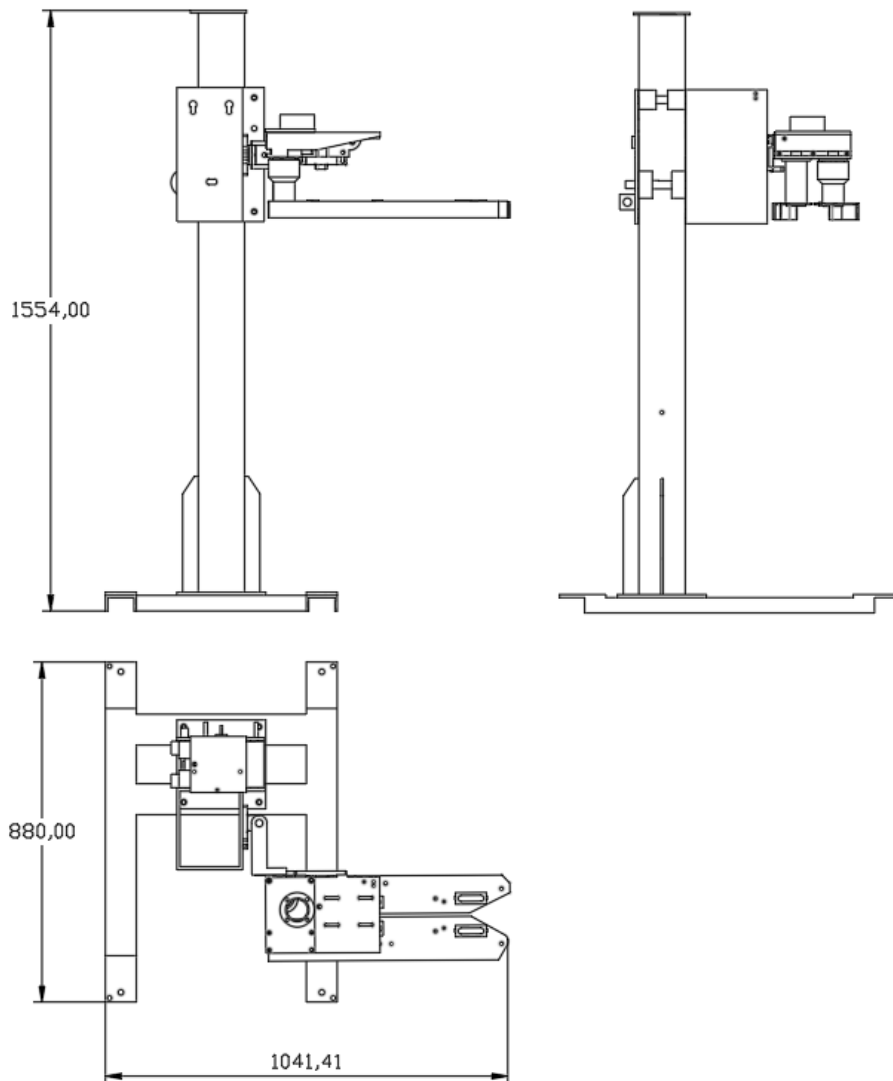
- With folding device and column for adjustable height.
- Stainless steel version for moist and semi wash down areas.
- Not suited for direct wash down, but splash or similar will be acceptable.
- Thread stand 6kg thread coils
- Capacity 6 – 12 bags per minute or higher depending of infeed conveyor, sack type and sack infeed method and automation
- Adjustable speed of motors for auto folding and sewing machine

Features:

1. Stainless Steel Column
2. Stainless Steel product interface parts
3. Special protection of steel parts not able to be made of stainless steel in general
4. Sewing head STEP SK35-6A is not stainless steel, but optimized with special protection of steel parts not able to be made of stainless steel
5. Stainless steel covers for CE norm certification
6. IP 21/23 or above protection of electrical components



SPECIFICATIONS:		
Model	STEP GK35-6A w. Column & Auto folding Aggregate –Mild Steel Version	STEP GK35-6A w. Column & Auto folding Aggregate – Stainless Steel Semi Wash Down Version
Product Interface Parts	Mild Steel	Stainless Steel
Seam Package Altitude	400-900mm	400-900mm
Seam Package Weight	10-50kg	10-50kg
Necessary Electrical Machinery	740W	740W
Outlook Size	1500 x 1500 x 750 (mm)	1500 x 1500 x 750 (mm)
Gross Weight	150kg	150kg
Item Number	42818040	42818040-SS



STEP FBS-10B Automatic Edge- Binding Stitching Packaging Machine



Procedure sequence

FBS-10

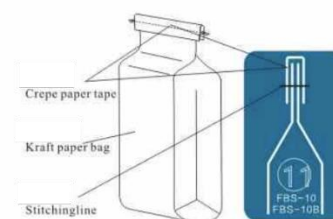


STEP FBS-10 Automatic Edge-folding Stitching Packaging Machine is suitable for bag top binding and stitching of thick paper bags, it has wide application in the fields of foodstuff, feed, chemical industry. This machine adopt photoelectric control system, which could automatically and continuously finish all the processes of bag top trimming, paper tape binding, stitching, paper tape snipping and thread snipping, of plastic woven bags.

Features:

1. Pneumatic system act the thread-snipping and lube spray.
2. Auto, gauge filling machine and conveyor.
3. Optional device: 5-digits counter, thread-break alarm.

Mode of bag top packaging



Specification Details	
Model	STEP FBS-10B Automatic Edge- Binding Stitching Packaging Machine
Voltage	(3PH) AC380/50
Gross Power	0.4
Motor Power of Sewing Machine	0.37
Sealing Speed	8.5 (11 can customized to be Max.)
Height from Sealing Center to the Floor	700 ~ 1400
Gas Source Pressure	0.6
Paper Tape Width	50
Sewing Machine Model	DS- 7C
Needle Mode	80800 x 250#
Sewing Machine Specification	20S/ 6 ` 20S/ 9 Fiber Thread
Height Space Request of Bag Top	150 ~ 170
Dimension (L x W x H)	750 x 1000 x 1870
Net Weight	150
Item Number	42851030

STEP FBS-20 Automatic Edge-Folding Stitching Packaging Machine

STEP FBS-20 Automatic Edge-Folding Stitching Packaging Machine is suitable for edge-folding and stitching of kraft paper bag or plastic woven bags, it has wide application in the fields of foodstuff, feed, chemical industry.

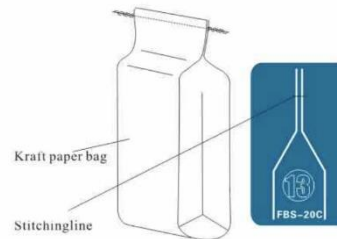
This machine adopts photoelectric control system, which could automatically and continuously finish all the processes of edge-folding, stitching, thread-snipping etc. of plastic woven bags.



Mode of bag top packaging.

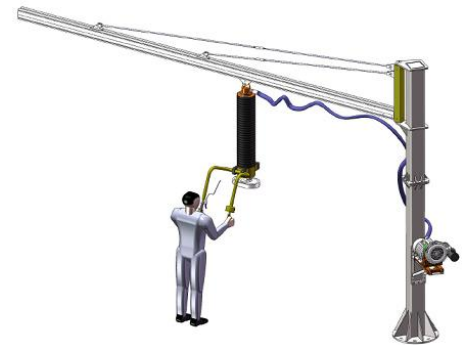
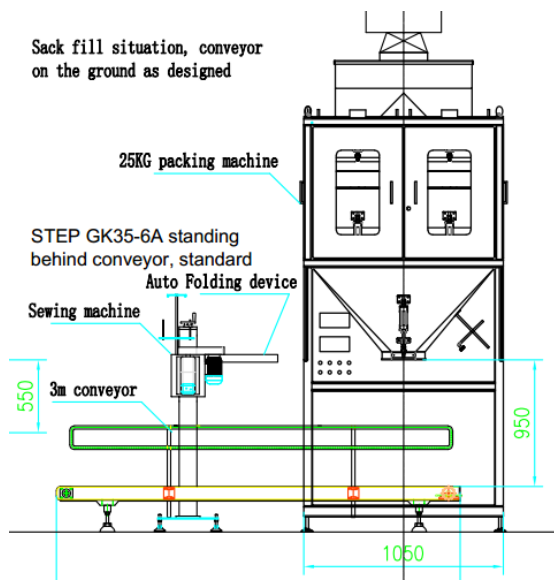


Suit for stitching packing of paper bag or woven bags after bag top folder.



Specification Details		
Model	STEP FBS-20 Automatic Edge-Folding Stitching Packaging Machine	STEP FBS-20C Automatic Edge-Folding Stitching Packaging Machine
Voltage	AC380/50	AC380/50
Gross Power	0.5	0.4
Transmission Motor Power	0.18	-
Motor Power of Sewing Machine	0.37	0.37
Sealing Speed	8.5	8.5
Height from Sealing Center to the Floor	700 ~ 1400	700 ~ 1400
Gas Source Pressure	0.6	0.6
Folding Width	30 ~ 40	-
Sewing Machine Model	GK95-1	GK95-6 GK35-2C
Needle Model	DT - H30 #26	80800 x 250#
Sewing Machine Specification	20S-6, 20S/9 Fiber Thread	21S/5, 20S/3 Terylene Thread
Height Space Request of Bag Top	150 - 170	150 - 170
Dimension (L x W x H)	1200 x 1000 x 1870	1200 x 1000 x 1870
Net Weight	200	150
Item Number	42851010	42851020

Complete sack filling line with scale and sack filling, conveyor and sewing machine for closing of sacks and after that vacuum lifting equipment, all part of Sal-Tech's product range



Drill Tool and Wires for sack/bag closing

Product	DESCRIPTION	Item Number
Drill Tool	Pull the handle and the sack is closed. Keep on pulling until the desired tension is reached	42218040
150mm Yellow	Sack closer 150mm green 5000 (5x1000) piece per bundle. Price per bundle of 5000 piece.	59550150
220mm Green	Sack closer 220mm green 5000 (5x1000) pieces per bundle. Price per bundle of 5000 piece.	59550220



STEP SP-2-1 Auto Clipping Machine

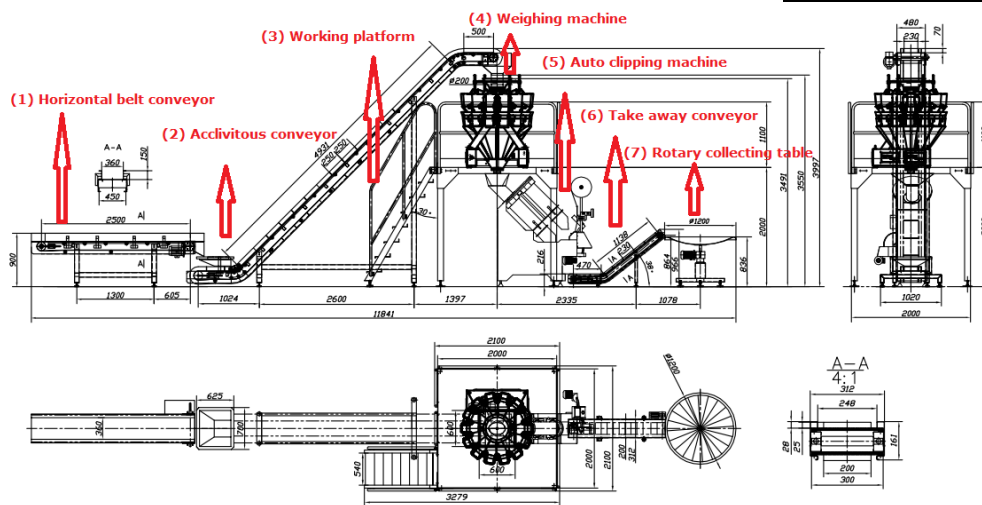
Auto Clipping Machine designed for netting fruits and vegetables, one motor controls the tube which enables the replacement of tube automatic, net extraction through sliding mechanism with 2 gears. Strip band cassette is good for 1 use and can be easily changed and user-friendly control panel.

Clipper specially designed for netting fruits and vegetables such as oranges, mandarins, lemons, grapefruits, potatoes, onions, tomatoes, peppers.



Specifications	
Weight of portion	0,5 to 5,0 kgs
PN Connection	6 bar 1.5m ³ /hr
Size of net tube	Ø200mm
Capacity bags/minute	25-30 bags per minute
Electrical connection	380/AC 50 Hz 2,6Kw
Item number	42901010

Support equipment, such as roll loader per request.



Complete line as one of many solution and layout options.



Clipper Details:

- 1) Material: aluminum-plated iron
- 2) Weight: 5.9KG per pallet
- 3) Thickness: 0.3MM
- 4) Width: 5MM in a pallet (with plastic plate, diameter of each pallet is within 400mm)
- 5) Quantity: about 14,000 pcs of clipper for a pallet (pls note one net packaging with 2 clippers)



Net Details:

- 1) Each tube could be filled with about 200 meters of net
- 2) The packaging size for one bag of net: 900 x 470 x 350MM
- 3) Each bag inclues about 4,000 meters of net
- 4) Net hole size: 10 x 10 MM
- 5) Material of the net: HDPE(high-density polyethylene)
- 6) The net is formed by weaving

