

# Sal-Tech Easy Packaging Strapping Solutions



**WE KEEP THINGS TOGETHER**



# Machines, Tools and Materials

## STRAPPING Basics

### Get the best out of strapping.

What it can and what it can't typical equipment for strapping:

			
<b>Manual H-34 Sealer H-21 Tensioner</b>	<b>Semi-Automatic STEP TP-202</b>	<b>Automatic STEP TP-601D</b>	<b>Full Automatic STEP TP-601A</b>

**Process:** With strapping you place a strap around your product. This strap is welded, sealed with seal, with geometry lock, so it will hold around the product. With strapping you can have manual, semi-automatic, automatic and fully automatic equipment. Before strapping you have to position your product, either in strapping one unit or several items, the final position must be present before your perform the strapping and this position must be geometrical stable. (See article about geometrical stability in packaging) In order to perform a correct strapping the product must have enough flat surface towards the strapping machine area, that secures that the strap can be tightened and released and still be tight after released by the spacer. You can strap both hard and soft products, but with limitations towards both types of products. The general limitation is the touching surface length that has to be larger than 100mm and flat.

#### Equipment used for different levels of Strapping:

##### Manual:

**General:** Ring strapping is possible. There are no upper limits to package size.

- Plastic Buckles 13S and PP strap for dispenser carton and handle P173 with knife or H-21 to do the tensioning. The strap is placed around the product.
- Seal, sealer H-34, tensioner H-23 and PP or PET strap from dispenser wagon. The strap is placed around the product.
- Electrical/Pneumatical tensioner and friction welder H-45 and PP or PET strap from dispenser wagon. The strap is placed around the product.

##### Semi-Automatic:

**General:** Ring strapping is possible. There are no upper limits to package size, except for what can be handled on the tabletop.

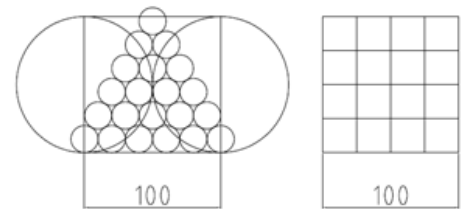
- Semi-automatic strapping machine STEP TP-202, where you manually place the strap around the product, where after it is tensioned and welded using heat. The product is positioned manually in respect to the machine that stands still.
- Semi-automatic pallet strapper STEP TP-202MV, where you manually place the PP/PET strap around the pallet, where after it is tensioned and welded using heat or friction welding. Typically, you position the machine in towards the pallet that would be standing on the floor or being transported on a roller conveyor system.

##### Automatic:

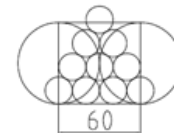
**General:** Ring strapping is not possible, but Sal-Tech Easy Packaging has possible solutions making arches that can open and close around the product so it can be done. Package size is limited to arch size and the products diagonal length if this is to be turned inside the arch.

- Automatic arch machine STEP TP-601D that feeds the strap around in the arch and retract it on starting the process, makes the tension and welds the strap. The strap will either be heat, friction and ultra sonic welded. The product must be positioned manually.

Geometry allows strapping as it has enough surface facing towards spacer.



Geometry can be strapped using special equipment.



Geometry does not allow strapping because the surface towards the spacer is too short.



Continued on page 11

# Sal-Tech Easy Packaging

## Semi-Automatic Strapping Machines



Semi-Automatic Strapping Machines are used for bundling together products and secure them during transport. They are ideal for strapping small to medium packages. Recommended for small production lines.

# STEP TP-202CE

## Semi-Automatic Strapping Machine

The STEP TP-202 is a very stable Semi-Automatic Strapping Machine that solves most needs for fast and simple bundling of items, securing boxes and giving them more stability.

### Features:

- High engineering standard and simple design
- Easy operation, simple maintenance
- Hinged stainless steel top plate
- Mechanical outside tension control
- Rigid castors with brake
- Energy efficient, motor only runs as needed
- Reliable P.C. Board control
- Affordable for every budget
- Offer maximum total value among competing brands
- Proven quality

### Options:

- Adjustable table height from 760 mm to 930 mm
- Adjustable table height electrical driven controlled via operator panel
- Retro fit scale 150kg
- Table rollers for easy moving of packages
- Core ø280

Item Number	Model
41000011	Standard
41000012	with adjustable legs



Specifications	
Strap Width	6mm - 15.5mm
Strap Tension	15kg - 45kg
Dimension	902mm x 586mm x 760mm
Net Weight	85kg
Power Requirements	Single Phase according to Local Standard

## Retro Fit Scale

Additional option for STEP TP-202CE and STEP TP-202L Semi-Automatic Strapping Machines or for the STEP TP-6000CE or STEP TP-601 standard machines.

Scale for placing under strapping machine making it easy to pack, strap and weigh in one place saving movements and your back. Making it easy to pack your box, close it and strap it, then get the weight and mark the box right away. You can even follow the weight of the packed box while you are packing it, securing you don't overload each box.

- Using indicator LP 7510 from easycomponent.com having many functions and easy to use.
- Electrical connection 230V 50Hz. (Battery type is optional on request)
- Load up to 200kg.

The retro fit scale can even be used under other machines, tables or whatever fits on the given dimension limits.

Item Number	Model
25002010	Standard TP-202CE
25002060	Standard TP-6000CE/601CE
25002070	Special dimension adapted, max 1500x800mm size



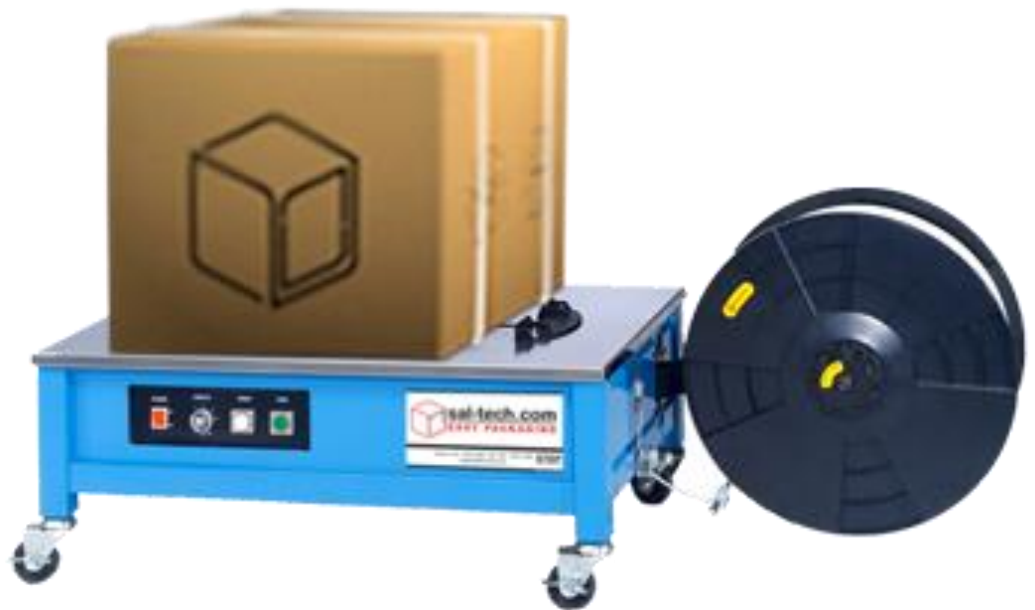
Item No. 25002010

## STEP TP-202L

### Semi-Automatic Low Table Height

Semi-Automatic Strapping Machine for low strapping applications. Best suited for heavier products for minimal lifting. With a table height 390mm with the same specifications as the STEP TP-202CE

Item No. 41000020



## STEP TP-203

### Semi- Automatic Mini Strapping Machine

#### Features

- Mid-sized model
- Smoke exhaust system
- Designed especially for office, bank, post office, book and department stores, etc.

**For other features and options, please refer to STEP TP-202CE**



Specifications	
Strap Width	6mm - 15.5mm
Strap Tension	9kg - 30kg
Dimension	632mm x 422mm x 805mm
Net Weight	80kg
Power Requirements	Single Phase according to Local Standard
Item no.	41000030

# STEP TP-502

## Semi-Automatic Strapping Machine



The STEP TP-502CE Semi-Automatic Strapping Machine is a packaging and strapping table with Electrically Adjustable Tensioning. Has adjustable table height.

The STEP TP-502CE Semi-Automatic Strapping Machine gives you many advantages for simple and safe operation

Specifications:	
Strap Width	5mm - 15.5mm
Strap Tension	8kg - 45kg
Table Height	780mm - 950mm
Net Weight	70kg
Power Requirements	Single Phase according to Local Standard
Item Number	41000040

### Features:



#### Adjustable Table Height

The table height is adjustable to any height between 780 mm and 950 mm.

#### Electronic Tension Control

Adjustment for wider strap tension (8-45 kg) can be easily done on the front control panel.



# STEP Ergo Strap Table

Semi-Automatic Strapping Machine

Heavy Duty Electrical Height Adjustable Table with

Built-in Scale and Strapping Machine

**NEW IMPROVED UPDATES 2023**



## GREAT VALUE FOR MONEY!



New Height adjustment with 4 memory functions



Instrument of Scale unit

### Features

- Lifts more than 150kg
- Static load up to 250kg
- Electronic tension between 5-55kgs
- Electronic scale with four (4) load cells for weighing up to 250kg.
- Heavy duty electrical table height adjustment between 700 and 1100mm
- White table plate size 1600x800x32mm Strapping machine with electronic adjustable tensioning for 12mm PP strap,
- Ergonomic design, to secure good working conditions, correct means less use of hours and less back pain
- Save on space needed in your packaging zone, but at the same time gives great working space
- Electrical connection 230V/115V 50/60Hz

Shown with table plate 2000x800mm



### Strapping machine operation panel



### Options:

- Table size 2000x800
- Table extension each 300x800
- Wheels for easy move around
- Measuring rulers on scale plate
- Special colors on demand

Item Number	Model
25001020	STEP E3 ERGO TABLE with Strap & Scale
25001030	STEP E3 ERGO TABLE with Scale
25001040	STEP E3 ERGO TABLE with Strap
25001050	STEP E3 ERGO TABLE only



## STEP TP-201YSS Semi-Automatic Vertical Strapping Machine

A Semi-Automatic Side Sealing Strapping Machine ideal for food and fishing industry. This machine offers reliability and high performance to accomplish difficult tasks. Built with stainless steel body and stainless steel parts in aggregate for cleanliness and food quality.

For 6 to 15,5 mm but set for 12mm PP strap, Adjustable Table Height, ø200 core.

### Item No. 41000070

STEP TP-201YS no stainless main aggregate parts, item no. 41000060

## STEP Retro fit Scale can be added to most semi Strapping machines – just ask!

### Optional Add-on

The Retro Fit Scale to add weighing capability to your semi-automatic strapping machine.

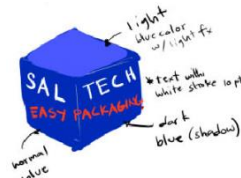
(Item No. 25002020)

For more information, contact us.



## STEP AS 50 Semi-Automatic Strapping Machine

The STEP Strap AS 50 is a basic semi-automatic strapping machine ideal for entry-level strapping process. Electronic tension adjustment



Specifications	
Strap Width	5 mm - 15 mm (12mm Standard)
Tension	5-50kgs
Strapping Speed	<3 seconds per strap
Table height	730mm
Machine Dimensions	(LxWxH) 840x535x730 mm
Net Weight	65 kg
Power Consumption	0.4 KW
Electrical Requirements	Single Phase According to Local Standard
Item Numbers:	41000081 230V50Hz version 41000082 115V60Hz version
Noise level	<75dB(A)



## STEP TP-502MV & STEP TP-502MVB

A Semi – Automatic Pallet Strapping Machine, suitable for corrugated card boards, concrete blocks and loaded pallet with cardboard boxes holding any type of products. Provides ergonomic and cost – effective solution for low volume vertical pallet strapping applications. Eliminates the use of manual tools, dispensers and can be moved easily beside the load you want to strap without moving the pallet.

### Features:

- Direct Drive Technology with German Made DC Motors
- Electronic Tension Control
- Compact Mechanical Strapping Head
- Jog Switch
- Good for Lower Height Pallet
- Adjustable Weld Cooling Time
- Mobility
- Various Applications



Specification		
Description	STEP TP-502MV	STEP TP-502MVB
Strap Type	PP Strap	PP Strap
Strap Width	9mm, 12mm, 15.5mm	9mm, 12mm, 15.5mm
Strap Thickness	0.6 – 0.8mm	0.6 – 0.8mm
Strapping Speed	18sec., 1 Strap (Package Size 1200L x 800W x 1000H mm)	18sec., 1 Strap (Package Size 1200L x 800W x 1000H mm)
Min. Package Height	380mm (Pallet is included)	380mm (Pallet is included)
Strap Core Inner Diameter	200mm (280mm is also available)	200mm (280mm is also available)
Tension Range	8 Kg – 70 Kg	8 Kg – 70 Kg
Length of the Sword	1250mm	1250mm
Net Weight	93 Kg	153 Kg
Machine Dimension	585W x 2315D x 1074H mm	585W x 2315D x 1074H mm
Power Consumption	0.33 Kw	0.33 Kw
Temperature of Working Environment	5 – 40°C	5 – 40°C
Electrical Requirements	110V, 220V, 230V, 240V 50/60Hz 1Ph	110V, 220V, 230V, 240V 50/60Hz 1Ph or Battery
Battery Spec	NA	VRLA Type, 12V, 50Ah (2 Pieces)
Battery Charge Time	NA	5-7 Hours (depends on the environment)
Battery Capacity	NA	Approx. 1000 – 1500 strapping cycles per charge (depends on package size and tension)
Battery Lifespan	NA	Approx. 300 Charges
STEP Item no.	41000150 for 230V 50Hz Version 41000151 for 115V 60 Hz version	41000160 for 230V 50Hz version 41000161 for 115V 60 Hz version

# STEP TP-502MH Horizontal Semi Auto Strapping Machine NEW VERSION



**STEP TP-502MH** inherits all of the advantages from STEP TP-502, such as compact strapping head, direct drive technology with German-made DC motors, and electronic tension control. It can be moved easily beside the load you want to strap, no need to move the pallet. The STEP TP-502MH is quick, ergonomic, and economical solution for low volume horizontal pallet strapping applications.

## Features

- Compact mechanical strapping head
- Adjustable strapping height
- Electronic tension control
- Jog switch
- Adjustable weld-cooling time
- Two moving direction

**Item no.:** 41000130



## Options

- Battery power supply (TP-502MHB) Item 41000140
- Edge protector holder
- Handle on the rear for back/forth movement

## Technical Data

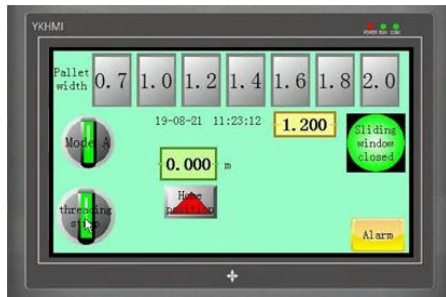
Strap Type	PP strap
Strap Width	9 mm - 15.5 mm
Tension Range	8 - 70 kg
Net Weight	292 kg
Electrical Requirement	110V, 220V, 230V, 240V 50/60Hz 1PH

## STEP Ergo Pallet Strapper Mobile

The STEP Ergo Ergonomic pallet-strapping machine, also known as a pallet strapper equipped with a touch screen is gaining popularity as a top choice for pallet packing across various industries. This innovative device offers a sleek and efficient method of strapping without requiring users to bend down, ensuring a comfortable experience for a single operator from one side only. Simply position the strapping machine in front of the pallet, engage the joystick, and let the ChainLance mechanism pull the strap underneath and around the pallet, securely tensioning and welding the strap with precision using the sealing head.

### Features:

- Innovative chain-pass technology
- Ergonomic design
- Patented fast threading
- Intelligent touchscreen



Easy over

and catch

And no bending down ☺



SPECIFICATIONS	
Dimensions	950mm*750mm*1250mm
Strap types, thickness, and width	Polypropylene (PP) / Polyester (PET)
Max. chain thrust	320 N
Charger and battery	Three stage full intelligent charger and 33.6V Lithium battery
Sealing head	Optional most types of battery sealers
STEP Item no.	41000190