

E3 Hallbrook Wrap 2100 Manual – UK Version

Danish Design built by E3Hallbrook.

Innovation has no limit.

Hallbrook
E³ Wrap
2100

**RELEASED
Order NOW**



 **E³Hallbrook.com**
DESIGN BEYOND IMAGINATION

 **RoHS**
Compliant

CE



Copyright © 2013 E³Hallbrook.com – Salbæk Technology Group

UK Manual doc.no.: 87101000F issued 05.03.2021-DFF

Index:

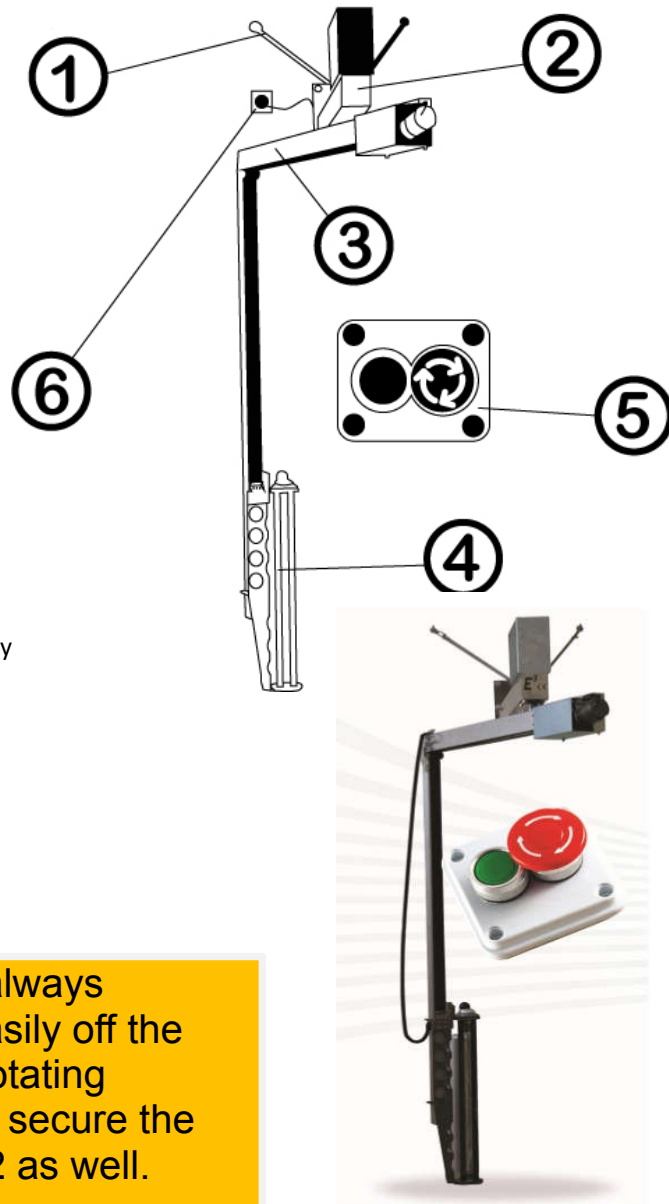
1. Overview of the machine
2. Installation
3. Safety and Ergonomics
4. Operation
5. Specification
6. Spare parts overview
7. Maintenance and Service
8. PLC programming
9. At the end of life
10. CE RoHS declaration of conformity

1. Overview of the machine

The E3 Wrap pallet wrapper consists of:

1. Suspension brackets, pitched roof, wall and stay bolts, etc. for suspension, standard kit.
2. Main arm with machine cabinet
3. Horizontal and vertical swivel arm
4. Foil aggregate
5. Control box
6. Connection cable
7. Manual

Before starting the machine, always make sure that the foil rolls easily off the film roll, do not overload the rotating motor unnecessarily hard and secure the motor 1. See warning page 12 as well.



NOTE:

Before commissioning and operating the machine, this manual must be read carefully and understood by the operator.

Pay special attention:

WARNING: Repeated placement of the pallet and / or products placed on the pallet outside the turning circle of the swivel arm so that it abuts the pallet / product both with and without activating the electric overload lock will destroy the gearbox for rotation of the swivel arm. Forcibly turning the swivel arm must be done with care, otherwise the gearbox will be damaged.

2. Installation

The E3 Wrap 2100 pallet wrapper is mounted on the wall, but can also be mounted on building columns etc. A standard suspension kit intended for a concrete wall is included. For mounting on different surfaces, a number of different support kits have been developed. According to the selected suspension, various suspension equipment and kits can be purchased.

Check list before installation and when ordering:

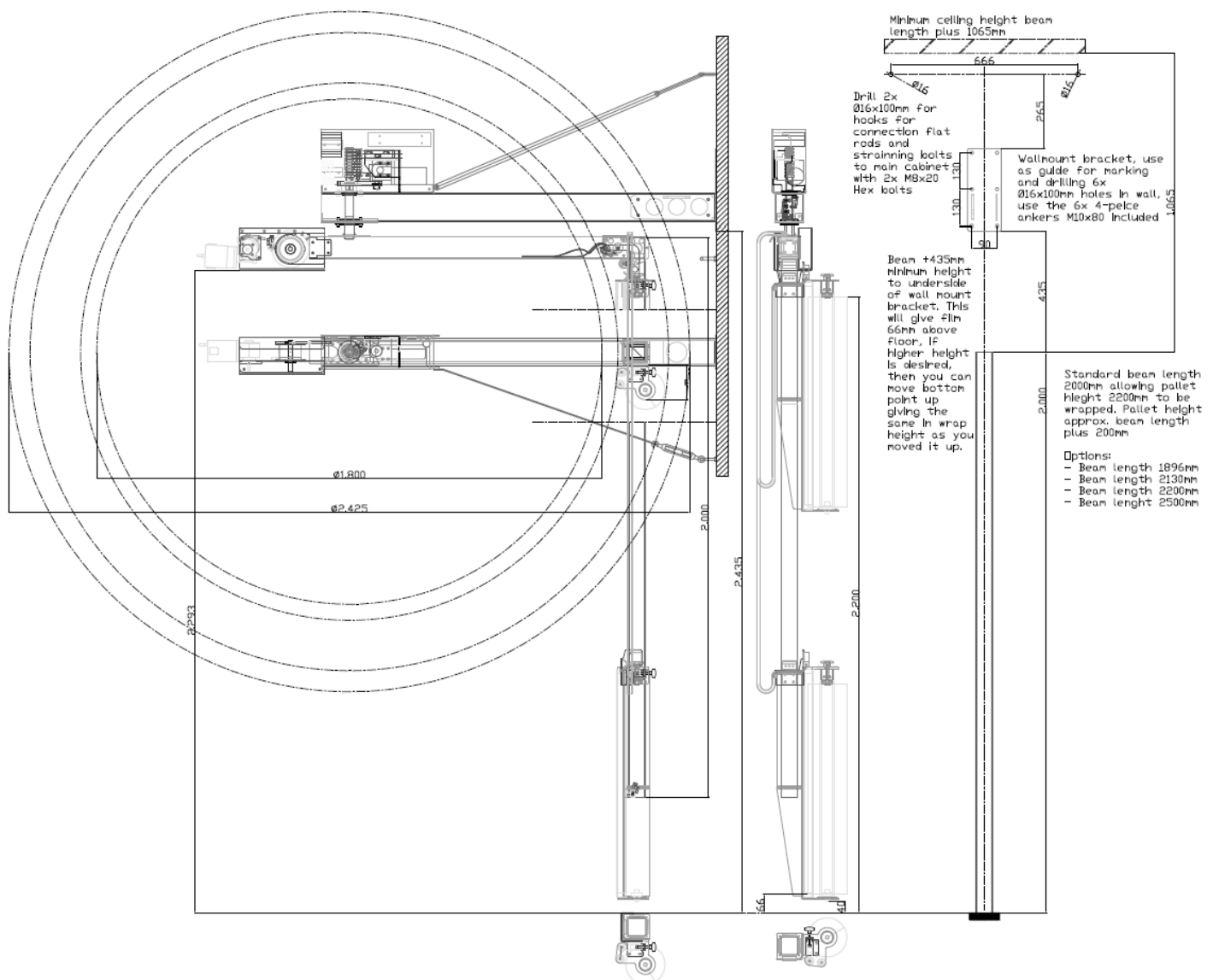
- a. Ceiling height minimum 3,000mm for machines with vertical arm length 2,000mm. (can alternatively be mounted at vertical height 2750, but then they can exercise 3 screws that hold the control cabinet together can not be mounted or removed, these should then be removed before installation.)
- b. Floor space in front of suspension point minimum 2.265mm
- c. Electrical connection 230Vx1 + N-50Hz or 110Vx1 + N 60Hz (Power supply must be switched to 110V position) 6Amp is sufficient.
- d. The nature of the wall / column is determined: Concrete / Iron / Brick / Aerated concrete / Wood / Plaster etc. The required additional installation kit is ordered.
- e. Foil selection: Clear / Black / White - 10/12/15/17/20 / 23my - Order quantity per order 1/12/35 rolls.
- f. Program selection: Low pallet is set to 1000/1250 / 1500mm, high pallet is set to 1500/1800 / 2100mm
- g. The standard swivel arm is 1,195mm, which makes it possible to wind 1,200x1,200mm pallets.
- h. Pallet height, standard 2,200mm, option of choosing 2,700mm pallet height. This is winding height, the pallet can be 75mm higher and still stand below the machine pivot point.
- i. Free passage for passage is for standard 2,280mm pallet height that can be wound version 2,200 mm. In relation to the choice of type of check, the height of equipment that must pass in the area and the height of the product they pass with.
- j. 6 pcs are used. Euro pallets as scaffolding for drilling and assembly work. If the height exceeds that recommended by the Danish Working Environment Authority, railings should be set up or a No. 2 lower level made all the way around the first and higher pallet stack..
- k. The E3 Wrap 2100 is most easily mounted using a stacker or forklift to lift it into place, but can be handled by one / two people when hanging.
- l. 1-2 hours should be set aside for installation where the area is closed off for the passage of other traffic.

Standard kit and installation:

As of 1 October 2014, the standard suspension has been changed so that standard stays and adjustment bolts are used, rather than wire and wire locks, etc..

Standard kit contains:

- 6 pieces. Anchor bolts M10x80
- 2 pcs. Anchor hooks M10x80
- 2 pcs. Adjustment bolts
- 2 pcs. Pull the stay
- 10 pcs. M8x20 umbraco bolts
- 10 pcs. M8 spring washer
- 8 pcs. M8 screen disc
- 2 pcs. M8 disc
- 2 pcs. Wood screw 4x3.5
- 2 stk. Raw plugs Ø6
- 1 set of screws for control box



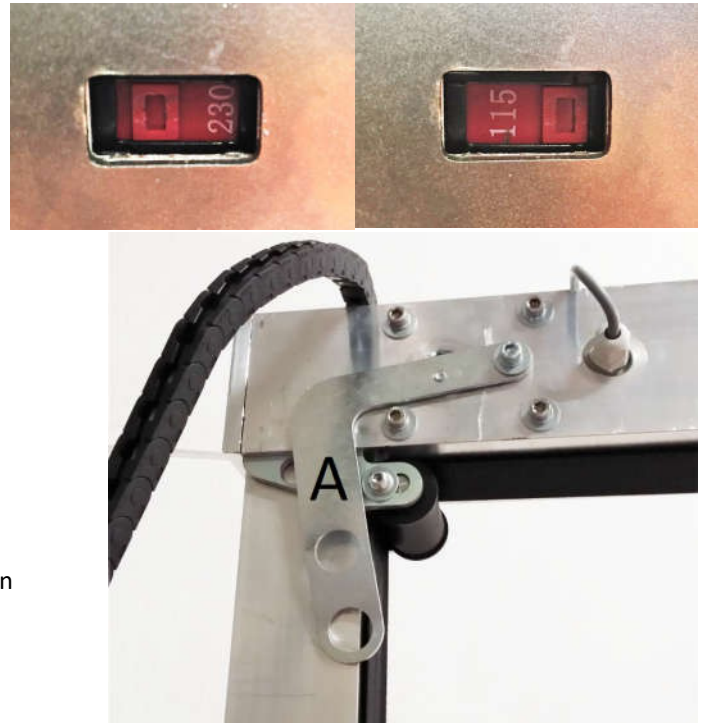
Tools required for standard installation: (Tools not included)

- Truck, pallet stacker or other lifting equipment, alternatively it can be built a scaffolding.
- Murhammer for drilling 8 pcs. Ø16x100mm and 2 pcs. Ø6x40 holes corresponding to the selected wall
- 13 and 17mm star socket wrench
- Star screwdriver
- Umbraco keys 6 and 5
- Koben
- Hammer

Check-list before installation:

- Ceiling height of minimum 3.075 mm. (A lower installation can be achieved by on sight changing position of hooks and connection rods away from standard)
- Floor space in front of mounting point, from wall and out, minimum 2.265mm
- Electric power connection 230Vx1+N-50Hz or 115Vx1+N 60Hz (Power supply must be reset for 115V position) Slide the button left or right to change the power.

To stabilize the package during shipment the actuator arm is placed reversed and needs to be rotated 180° once the parcel is received. Please loosen the screw and turn the actuator arm, A, around as seen in picture.



5. Installation/ Mounting

Before mounting make sure to properly measure where the machine is to be placed on the wall, see page 6.

Standard mounting kit:

As Per October 2014 the standard mounting kit has been changed to stay rods instead of wires. The standard kit needed to assemble the E3 Wrap machine to the wall is delivered in labeled bags. Please check all parts are provided.

A. Mounting of wall mount bracket

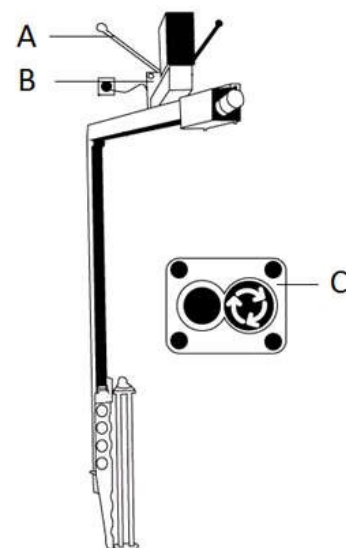
- | | |
|------------------------|-----|
| • Flat connection rods | x 2 |
| • Anchor bolts M10x80 | x 6 |
| • Anchor hooks M10x80 | x 2 |
| • Straining bolts | x 2 |

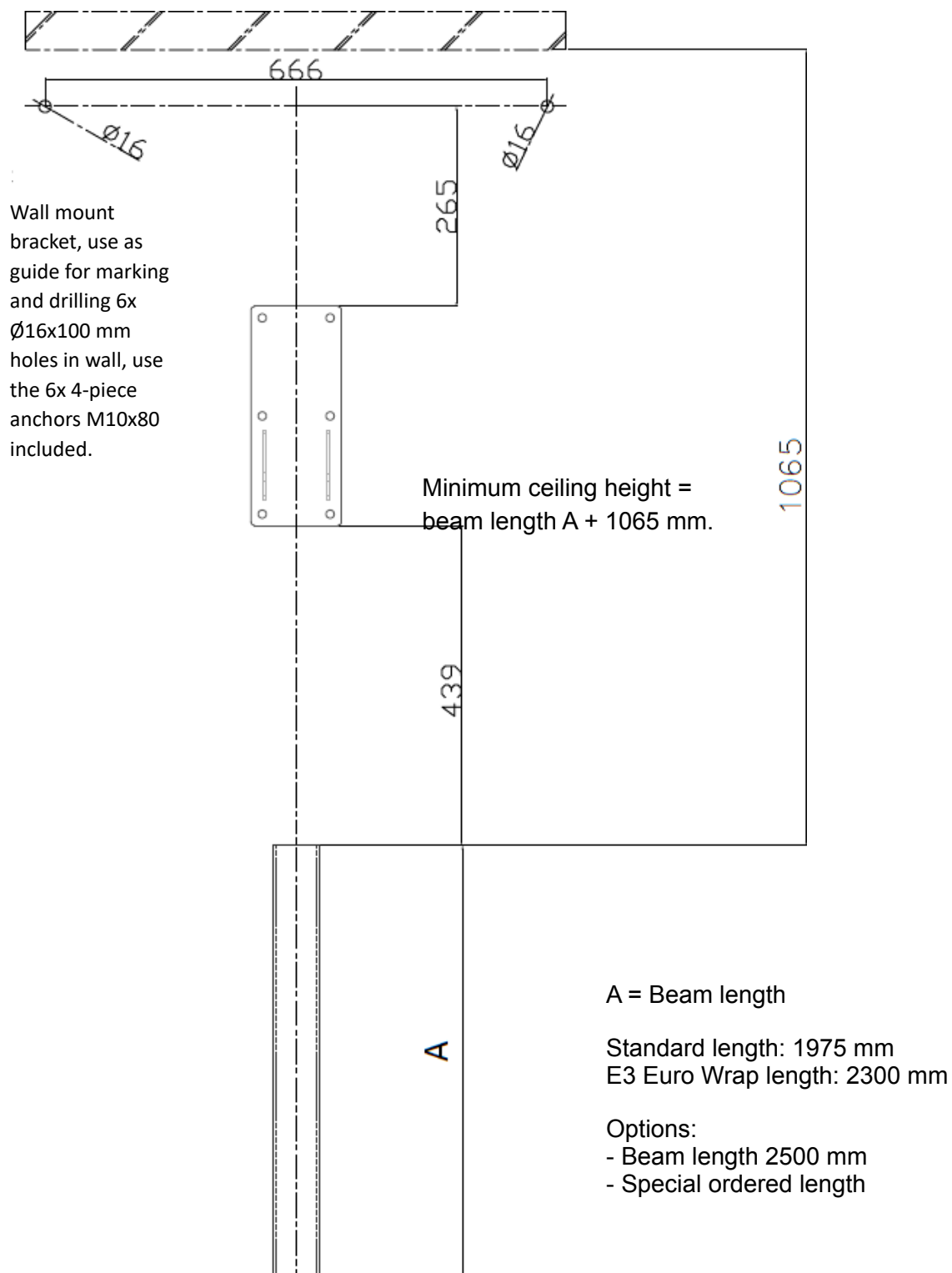
B. Mounting of connection cable

- | | |
|--|-----|
| • Connection cable, acc. to local standard | x 1 |
|--|-----|

C. Mounting of electrical box

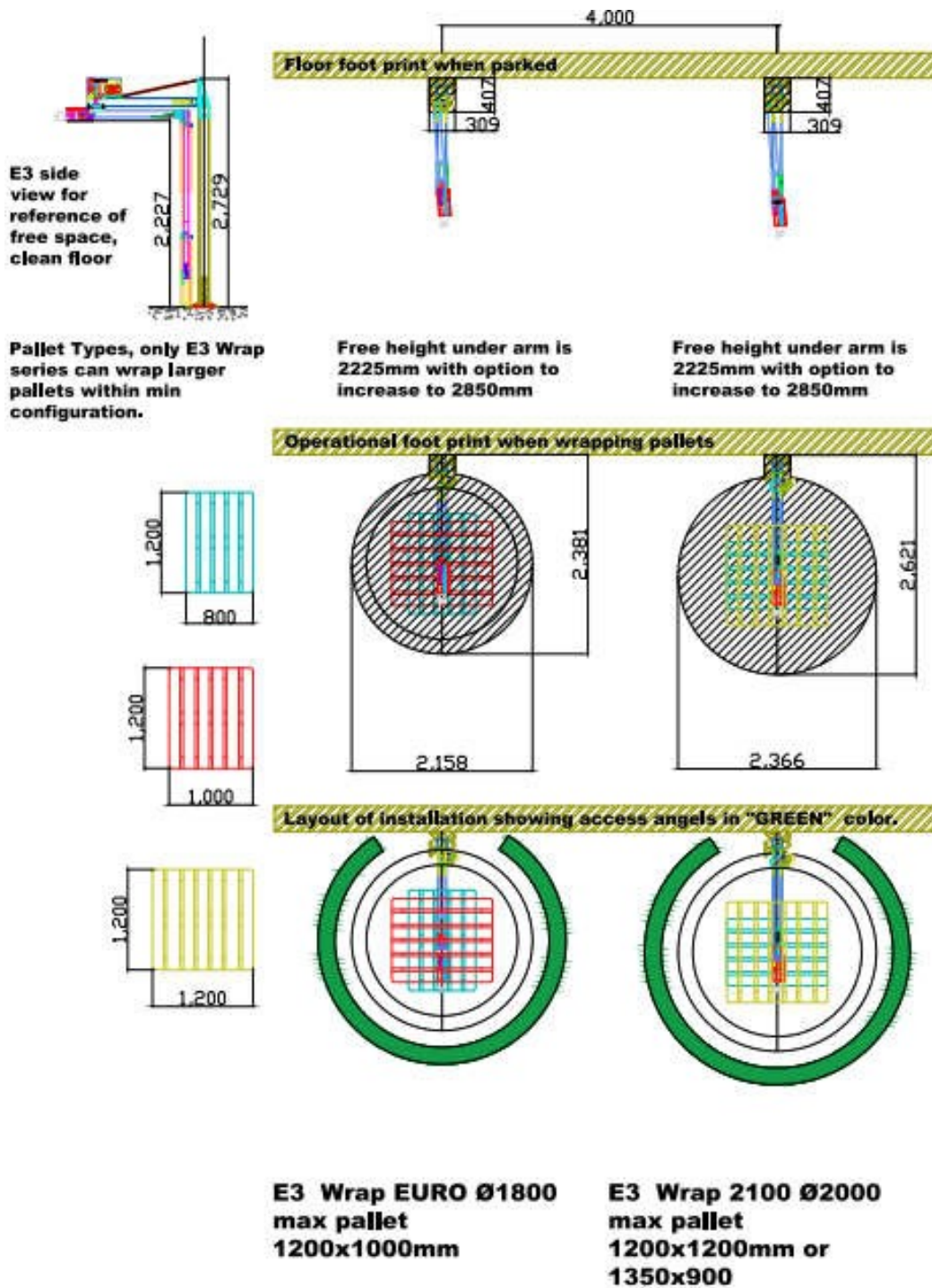
- | | |
|---------------------------------|-----|
| • Wood screw 4x3,5 | x 2 |
| • Rawl plugs Ø6 | x 2 |
| • Set of screws for control box | x 1 |





Beam standing on the floor

Foot Print of E3 Wrap 2100 models:



The wall shown are only for illustrative reasons, all 5 machine examples can be installed in the work are without the need of wall. E3 type's can be installed on the wall directly giving less foot print.

Mounting of the E3 machine

A. Mounting of Bracket & support bars

When the height for the machine has been measured and a secure platform has been installed, place the bracket on the wall and use a spirit level to make sure the bracket is placed straight. Mark the 6 holes, Ø16x100 mm on the wall. Perforate using a hammer drill.

Drill the holes for the supporting connecting hooks and rods and hang them up before the machine is attached to the wall, then when mounting the machine through the bracket the rods are ready to be attached to the machine.

Slide the main beam with control box on to the mounted bracket on the wall. Secure the M8 screws are thoroughly fastened.

B. Mounting of aggregate on to beam





Once the machine is up with the main beam and rotating arm, the pole needs to be connected. Make sure to slide the aggregate on to the pole before the pole is attached to the rotating arm. Once the aggregate is on the pole take help from a step ladder placed under the machine to support the bottom of the aggregate on one of the footsteps and the pole on another while attaching the pole vertically to the rotating arm. Connect the cables inside the pole to the cables in the rotating arm following the color coding of the cables. Once the pole is attached to the belt and IR sensor bracket can be connected to the aggregate using the Standard kit D:

- Assembly of aggregate to pole



Observe the direction of the aggregate mounted where the M6x16mm Allen bolts are used to assemble the aggregate to the pole on the same side as the black belt.

Examples of installed machines:

Mounted on concrete pillar		<p>The following is applied to suspensions:</p> <ul style="list-style-type: none"> • Standard kit for hanging on a concrete wall consisting of 6 pcs. concrete anchor "4 piece" type. • 6 pcs. M10 concrete anchor • 2 pcs. eye bolts for wires • 2 pcs. wire • Ø6 rawl plugs and screws for hanging control box
Mounted on steel column		<p>The following are used for hanging:</p> <ul style="list-style-type: none"> • 6 pieces. M10x30mm bolts, thread cut in column • 2 pcs. M10 bolts for wires • 2 pcs. wire • Ø6 rawl plugs and screws for hanging control box
Mounted on brick wall		<p>The following are used for hanging:</p> <ul style="list-style-type: none"> • 6 pieces. M10x350mm threaded stay, M10 nuts x 12 pcs., And washers • 2 pcs. M10 bolts for wires • 2 pcs. wire • Ø6 rawl plugs and screws for hanging control box
Mounted on aerated concrete wall		<p>The following are used for hanging:</p> <ul style="list-style-type: none"> • 6 pieces. M10x350mm threaded stay, M10 nuts x 12 pcs., And washers • Plate 600x800 for wall reinforcement 2 pcs. • 2 pcs. M10 bolts for wires • 2 pcs. wire • Ø6 rawl plugs and screws for hanging control box

3. Safety & Ergonomics

The E3 Wrap 2100 pallet wrapper is designed to meet the strictest safety requirements in terms of direct safety, but also simple and easy operation and understanding of the machine's operation and operation.

Direct security features:

- A. Emergency stop located in control box

- B. The pallet is placed directly on the floor so that no extra force has to be provided to push / pull the pallet truck up onto the turntable. This minimizes the risk of tipping pallets, as well as boxes that flatten the pallet.
- C. Collision safety interruption, electrical and mechanical in 6 levels
- D. Safety against loss of unit in 4 levels.

Ergonomics built into the E3 Wrap 2100 concept:

- A. By using pallet wrappers instead of hand film winding, the influence of the body with skewed twisting forces, to become dizzy and similar adverse effects on effects is avoided.
- B. Using the same time, far more pallets can be packed by one or more people without effort.
- C. The pallet is placed directly on the floor so that no extra force has to be provided to push / pull the pallet truck up onto the turntable.
- D. The foil roll weight is limited to 10.2 kg so that the limit of 12 kg for repeated daily lifting set by the Danish Working Environment Authority and EU rules is not exceeded.
- E. The foil is delivered in 1 pc. cartons approx. 10.5kgs, 12 pcs. quarter pallet or 40 pcs. Euro pallet thus lifting of heavy boxes is avoided.

Into direct security:

Make sure that the area around the machine is kept clear so that it is easy to place the pallet and avoid collisions. Have the machine serviced by an E3 Hallbrook Authorized Service Technician every two years.

In the event of a collision, carry out a safety check of the suspension and the machine.

Carry out daily and weekly safety checks as well as cleaning, etc., see maintenance section.

4. Operation

The E3 Wrap 2100 pallet wrapper is easy to use and can pack most types of pallets, provided they are stable and can withstand the pull that the foil gives in the pallet / product as a result of the brake pre-tensioning of the foil being used.

The 7 steps in packing a good pallet

1. Pack the pallet so that it is stable. Use liner paper / cardboard and possibly stabilize the pallet with strapping tape so that the overall result of the pallet wrapping provides a safe and stable pallet that shows your product from the best angle when received by your customer.
2. Place the pallet inside the turning circle by turning the arm and the foil roll.

WARNING: Repeated placement of the pallet and / or products placed on the pallet within the turning circle of the pivot arm so that it abuts the pallet / product both with and without activating the electrical overload lock will destroy the gearbox for rotation of the pivot arm. Likewise, if you force turn the arm, the gearbox will be damaged.

If the turning arm is completely blocked, the electrical overload barrier will step in and stop the turning process. Misuse of this function is not permitted, as it is an absolute safety function not intended for repeated activations.

3. Tie the foil to the pallet. Hold the unit again and pull the required length free and tie on the pallet. Operate the machine so that when the machine starts and turning the arm starts its movement it turns away from the operator and the foil will be positioned so that it is naturally clamped around the pallet.
4. Press start, the machine finds the height of the pallet.
5. Continue working while winding the pallet
6. Come back and cut the foil over.
7. Remove the pallet.

Setting of foil voltage on the foil unit:

The handle is thus rotated spring for the brake block increases or decreases tension against the foil unwinding roller.

5. Specification:

- Power supply: 1x230V/110V – 50/60Hz - Changeable power grid to inlet cable multinational.
- Power consumption: Less than 800W
- Weight: 60kgs
- Noise level. Less 72DBA
- Dimensions:
 - Packed: L1525xW545xH200mm – Filmed/cardboard box pending
 - Installed: H3075xW2366xD2621mm – Ø2366mm mechanical free space plus safety
 - Parked: 309 x 407mm
 - Free room under rotating arm for truck passage: 2200mm (optional 2700mm)
- Compliance: CE, ROHS
- User Certification: None needed.
- Capacity:
 - Maximum pallet:
 - Height: 2200mm (plus 75mm)
 - Width x Length: 1200x1200mm
 - Speed of wrapping:
 - Low pallet height 1000mm: 55-60 seconds
 - High pallet height 1800mm: 105-110 second
 - Number of wraps
 - Bottom: 1 in the beginning +1 in the end: Total 2
 - Top: 1 in the top
 - Change: Both bottom and top count can be changed by altering PLC program.
- Human interface for control:
 - Start button:
 - Short, starts the wrapping cycle
 - In cycle, press start will stop upward motion acting as top point setter.
 - Long press above 3 second: Reset sequence
 - Emergency button:
 - Pressed in: Machine cannot operate, PLC is powered and active
 - Released: Machine can operate
 - Power switch:
 - On: Machine is powered
 - Off: Machine is powerless from point of cable entry.
 - Fuses:
 - Inlet box: 6Amp 230V fuse Ø5x20 slow.

- Fuse for M1 motor: 7Amps 2230V fuse 6,3x32mm, slow sand filled fuse.
- Communication interfaces
 - PLC: Programming cable ELC-USB Item no.: 95081884
- Documentation:
 - User manual: The user manual can be supplied in UK, DK, SE, NO, DE, FR, ES, PT, RU
 - Service manual: Service manual in UK language
 - Parts manual: Parts manual in UK language
 - Layout: UK language
 - Installation guide: UK Language

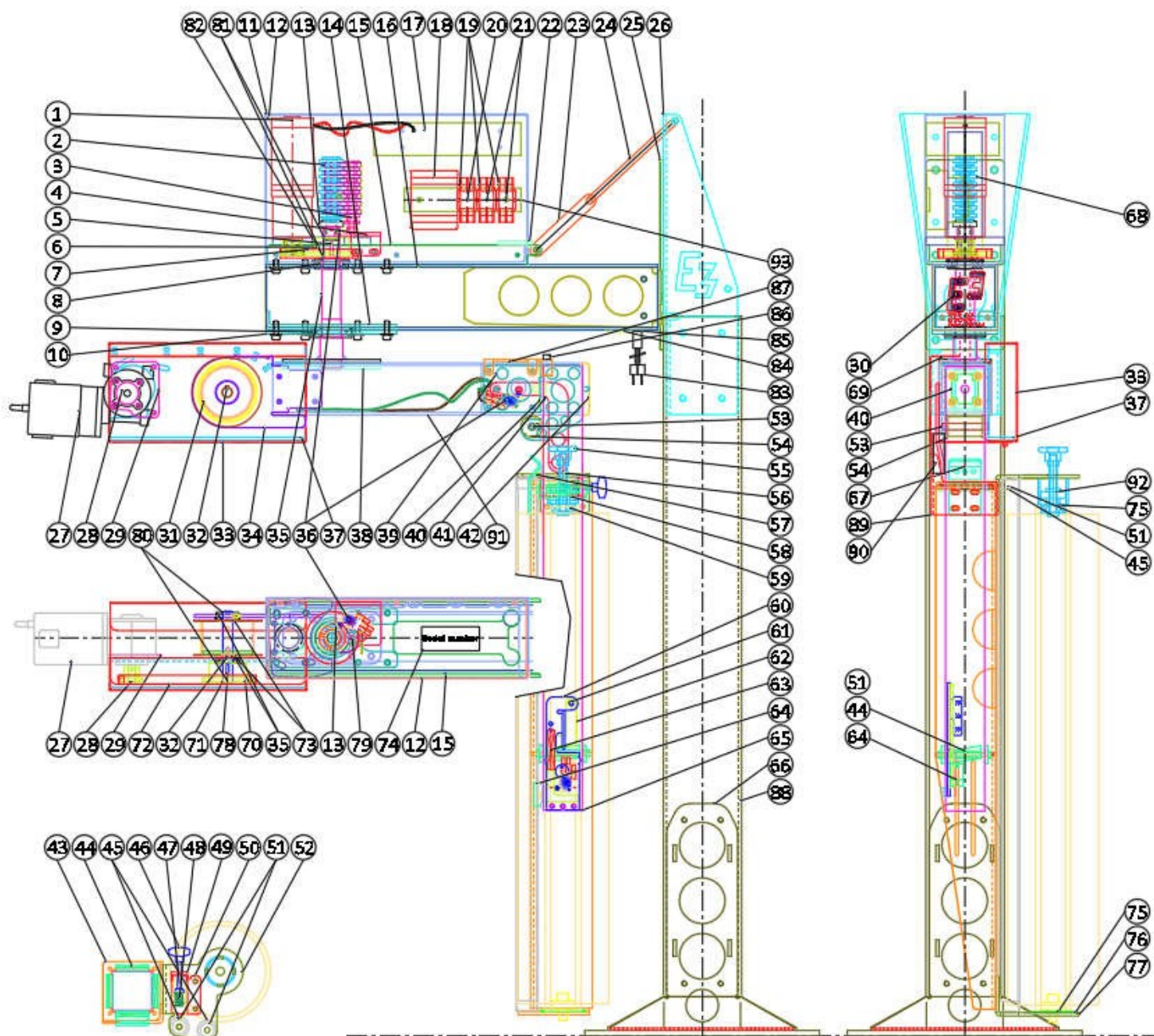
Safety issues:

- Blockage of rotating arm:
 - Low speed less than 0,5meter/second
 - Main M1 motor will stall
 - Fuse Motor 1 will fuse off.
 - Electrical cut off and reset of program
 - Mechanical safety break gear to motor screws M5x20 pieces with limited grip.
 - Collapse of chain tightening allow free movement
- Drop of carriage:
 - Weight limited under 16kgs at maximum of film roll
 - Recommended interval for exchange of strap, every 2 years
 - Glide bearing don't allow free drop and fall, will slide down
 - Bottom screw to secure free space in all situations
- Movie specification:
 - Ref. document: 54752000 latest version.
 - Film width: 750mm
 - Film diameter max: 140mm, standard aggregate, 200mm PLUS aggregate.
 - Film roll weight: Ca. 10,2kgs
 - Cores diameter: Ø38mm
 - Core length: 770mm

WARNING

In case of replacement of fuse for motor 1 (rotation), the machine must not be used until motor 1 is cold again, approx. 15 min wait may be sufficient.

Do not heat this motor and cables may melt!



Position	Item no	Description	QTY	Unit	Note
1	95400018	Gear Motor 23rpm@24Nm & steel 40Cr output shaft	1	Piece	
2	87106200	Terminals Assy formed	7	Piece	
3	87106010	Slipring Terminal Terminal holder	1	Piece	
4	87102081	Bracket Slipring Micro SW	1	Piece	
5	93805515	Key A 5x5x15 DIN 6885	1	Piece	
6	93733256	Sprocket 06B Z25 Ø25mm Key 5 M5x2	1	Piece	
7	93733000-14	Chain B6 14 joints	1	Piece	

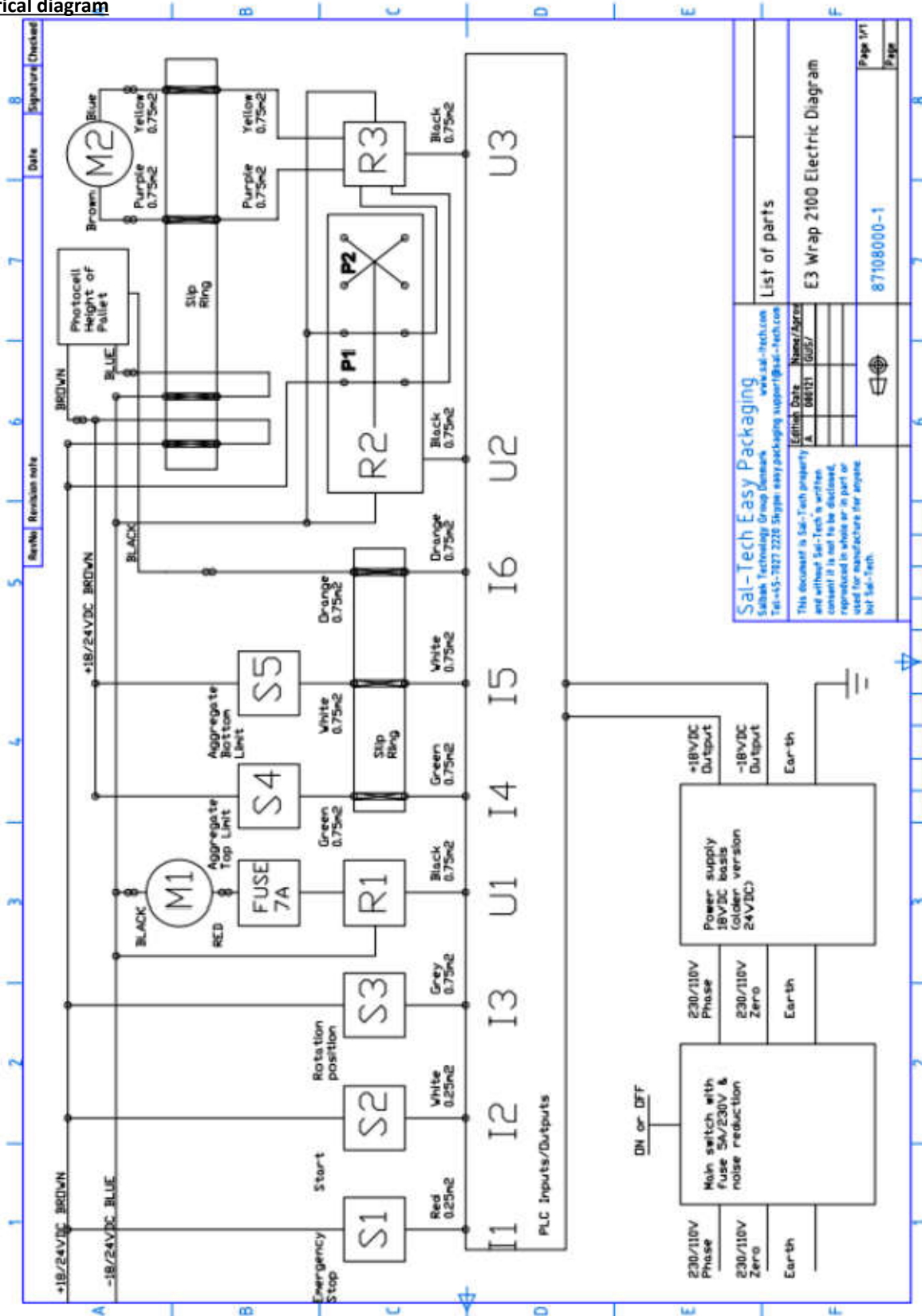
Position	Item no	Description	QTY	Unit	Note
8	92062053	Bearing 6205-2ZNR	1	Piece	
9	92062063	Bearing 6206-2ZNR	1	Piece	
10	87102040	Lower Bearing Plate	1	Piece	
11	87102120	Cover Back Panel	1	Piece	
12	87102130	Cover Front Panel	1	Piece	
13	87102090	Slipring Faster	1	Piece	
14	87102160	Lower Inside Plate	1	Piece	
15	87102110	Main Body Plate	1	Piece	
16.1	87102100	Main Beam Alu 1320 STD	1	Piece	Easy
16.2	87102100-1500	Main Beam Alu 1500 Largo	1	Piece	Largo
17	95201820	Power Supply 18V 20A	1	Piece	
18	95081261	CPU with 13-LED-indicators COVER	1	Piece	
19	95171003	Relay Socket PTF08A	3	Piece	
20	95170005	Relay LY2 24VDC Double	1	Piece	
21	95170004	Relay LY1 24VDC Single	2	Piece	
22	95259010	Fuse Holder FH043 Ø6x30	1	Piece	
22	95256070	Fuse 7A 32x6,3 Special	1	Piece	
23.1	87101980	Hanger support	1	Piece	Easy
23.2	87101980-980	Hanger support	1	Piece	Largo
23.3	87101980-780	Hanger support	1	Piece	EURO
24	91Y11501	Straining Screw M10x150 Zi	2	Piece	
25	87102000	Wall Mount Welded	1	Piece	
26	87101550	Pole top	1	Piece	
27	95400003	M2 Motor	1	Piece	
28	93733101	Gear wheel T11 ø10	1	Piece	
29	87102232	Motor Adaptor plate	1	Piece	
30	87102151	Front Cover with E3 Printed Black	1	Piece	
31.1	87103100	Lift wheel with strap 3300mm	1	Piece	Easy
31.2	87109563	Lift wheel with strap 3900mm	1	Piece	Largo
32	93804412AB	Key 4x4x12 Form AB	1	Piece	
33	87103260	Protection Cover	1	Piece	
34	87103051	Lift plate II	1	Piece	
35	87102050	Axel welded	1	Piece	
36	95020005	Microswitch KW 1E4 T125 For E3 Wrap 2100	1	Piece	
37	87103041	Lift plate I	1	Piece	
38	87103020	Inside Fix Plate Rotary Arm	1	Piece	
39.1	87104030	Plate Support Roller Corner 6mm	1	Piece	Right side
39.2	87104031	Plate Support Roller Corner 7/32	1	Piece	Left side
40	87104040	Cross support plate	1	Piece	
41	87103320	Arm for top position right	1	Piece	
42	87104050	Front cover plate Aluminum	1	Piece	
43	87105110	Aggregate Base Welded	1	Piece	
44	87105041	Glide Bearing	8	Piece	
45	87105230	Roller for Film Control	2	Piece	
46	91881300	M8 Handle inside thread black Plastic	1	Piece	
47	87105200	Brake Pad	1	Piece	
48	90012060	Compress spring Ø1/Ø12,5x36,5mm	1	Piece	
49	87105180	Brake Base Plate	1	Piece	
51	92006282	Bearing 628ZZ	2	Piece	
52	87105240	Aggregate STD Top Bracket H32mm Welded	1	Piece	

Position	Item no	Description	QTY	Unit	Note
52	87105240	Aggregate STD Top Bracket H32mm Welded	1	Piece	
53	87104060	Axel Lift Strap Roller	1	Piece	
54	87104020	Roller	1	Piece	
55	91871300	M12 Handle inside thread black Plastic	1	Piece	
56	93101224	O-ring 12,3x2,4	1	Piece	
58	87105220	Disc Film Holder Ø39x10mm	1	Piece	
59	92063012	Bearing 6301-2RS	1	Piece	
60	87105310	Button Switch Bracket	1	Piece	
61	90106206	Brass bushing ø6/ø10-6	1	Piece	
61	90106204	Brass bushing ø6/ø10x4	1	Piece	
62	87105320	Button Switch Lever	1	Piece	
63	T6-1-30160	Cutter Tension Spring	1	Piece	
64	87105300	Actuator microswitch	1	Piece	
65	87104010-2000	Beam 2000mm	1	Piece	
66.1	87101510	Pole foot 1 piece	1	Piece	Optional
66.2	87101550	Pool foot plate	4	Piece	Optional
67	87103060	Strap Holder	1	Piece	
68	87109568	Slipring x8 Assy w. tube	1	Piece	
69	87103340	Cover Lift wheel Unit	1	Piece	
70	93733253	Sprocket 06B-T25 Ø15mm-Key5x5-Zink	1	Piece	
71	87103090	Axel Lift wheel	1	Piece	
72	93733000-28C	Chain 28 with joint	1	Piece	
73	91Z15210	Shim Disc ø15/ø21x1,0 DIN 988	1	Piece	
74	NA	Machine serial number label	1	Piece	
75	91Z12182	Shim Disc ø12/ø18x0,2 DIN 988	1	Piece	
76	87105160	Disc Film Support Ø70x2	1	Piece	
77	87105330	Bottom bracket aggregate	1	Piece	
78	93804415	Key 4x4x15	1	Piece	
79	87106080	M8x120 Bolt Slipring	1	Piece	
80	94400015	Seeger Ring A15 DIN 971	2	Piece	
81	94400025	Seeger Ring A25 DIN 971	2	Piece	
82	91Z25355	Shim Disc ø25/ø35x0,5 DIN 988	1	Piece	
83.1	95900018	Cable Main Connection Siemens Type Plug 2meters	1	Piece	230V 50 Hz
83.2	95900022	Cable Main 110V USA plug	1	Piece	110V 60Hz
84	95255005	Fuse 5A 20x5	1	Piece	
85	95190005	Inlet Single Phase AC Filters	1	Piece	
86	95925030	Energy Chain 10x6mm 2500mm	1	Piece	
87	87105250	Top Bracket Energy Chain	1	Piece	
88.1	87101520	POLE Base 1495mm	1	Piece	Optional
88.2	87101520	POLE Top 1495mm	1	Piece	Optional
89	87105260	Bracket Energy Chain Agg	1	Piece	
90	95000018	Photocell Q50 Diffuse 5M cable FAQD-P501MPL- I3A2	1	Piece	
91	87103010-1195	Rotating Arm Base 1195	1	Piece	
92	94410012	Seeger Tooth ring ZA 12	1	Piece	
93	95279910-175	DIN Rail 35x175 electric low profile	1	Piece	

Cable overview

Cable no.	Item no.	Color	From Sub mount point	To point of final secondary mount
1	81708510	Brown Blue Green/ yellow	Power Supply L+ Power Supply N Power Supply Earth	Intel L+ Inlet N Inlet Earth
2	81708520	Green/yellow	Power Supply Earth	Slipring Earth Terminal no. 1
3	81708530	Blue	Power Supply 18/24V-	R1.4
4	81708540	Blue	Power Supply 18/24V-	M1 Black or Red
5	81708550	Brown Brown Brown	Power Supply 18/24V+	Cross Point Slipring Terminal 4 LS1-COM
6	81708560	Brown	Power Supply 18/24V+	R2.4
7	81708570	Brown	PLC-L+	PLC-Q3.1
8	81708581	Red White Black	PLC-I1 PLC-I2 PLC-L+	Control box emergency switch Control box start switch Control box emergency switch
9	81708590	Blue	PLC-M	R3.1
10	81708600	Grey	PLC-I3 Zero Position Rotation	LS1-NO
11	81708610	Red	PLC-I4 Aggregate Top Limit Switch	Slipring Terminal no. 5
12	81708620	White	PLC-I5 Aggregate Bottom Limit switch	Slipring Terminal no. 6
13	81708630	Brown	PLC-Q1.1	PLC-Q2.1
14	81708640	Brown	PLC-Q2.1	PLC-Q3.1
15	81708650	Brown	PLC-Q1.1	R3.4
16	81708660	Black	PLC-Q1.2	R1.8
17	81708670	Black	PLC-Q2.2	R2.5
18	81708680	Black	PLC-Q3.2	R3.5
19	81708690	Purple	R1.6	Slipring M2 power terminal 2
20	81708700	Yellow	R1.3	Slipring M2 power terminal 3
21	81708710	Red	R3.3	M1 Black or Red
22	81708720	Black	R2.3	R1.2
23	81708730	Black	R1.2	R1.5
24	81708740	Brown	R2.4	R3.4
25	81708750	Blue	R1.4	R1.7
26	81708760	Blue	R1.1	R2.1
27	81708770	Blue	R2.1	R3.1
	81708780	Blue	R1.1	R1.7
29	81708790	Blue	Slipring preassembly, ring + cable	Photocell Blue
30	81708810	Yellow	Slipring preassembly, ring + cable	M2- Blue
31	81708810	Purple	Slipring preassembly, ring + cable	M2-Black
32	81708820	Brown	Slipring preassembly, ring + cable	Cable 87108830/LS2-COM
33	81708830	Green	Slipring preassembly, ring + cable	Cable 87108840
34	81708840	White	Slipring preassembly, ring + cable	LS2-NO
35	Two Cables	Red	M1-Red	Cable for M1 Black
36		Black	M1-Black	Cable for M1 Red
37	One Cable	Black Red	M2-Blue M2-Black	M2 Cross field Blue cable 87108780 M2 Cross field Black cable 87108790
38	87108850	Brown Brown Brown	LS2-COM	LS3-COM Cable 87108800 LS2-COM
39	87108860	Red	M2 Crossfield Red cable 87108810	LS3-NC
40	87108870	Brown	Control box emergency switch	Control box start switch
41	87108890	Orange	Slipring preassembly, ring + cable	Black signal cable photocell

7.: Electrical diagram



8.: Maintenance & Service

What needs to be done to keep the pallet wrapper in good working order is limited. It is recommended to keep the machine clean and free of dust etc. Chains must be lubricated at regular intervals.

Security check:

It is recommended that a security check is carried out weekly as a minimum and after any. on driving or blocking the turning arm has occurred.

- Check that all wall mounting bolts are tight and do not in any way indicate that they are working in relation to the suspension point.
- Check that the free movement between the floor and the unit in the bottom position is evenly distributed and that the unit floats approx. 50mm above the floor in the full turning circle.
- Check that the wire / slant stay is tight.
- Check machine for loose or otherwise damaged mounting.
- Check seat belt for damage. Whether it is frayed or has burrs etc. SHOULD BE REPLACED.

For installation and service, please contact our service department:

International Customer Support:

Skype: easy.packaging

Telephone: +45 – 7027 2220

support@saltech.com

9. PLC programming

For programming the PLC to change the program composition use programming cable 95051884 which can be ordered.

PLC program standard and special editions can be requested by contacting our sales or service department who will also advise on software for programming.

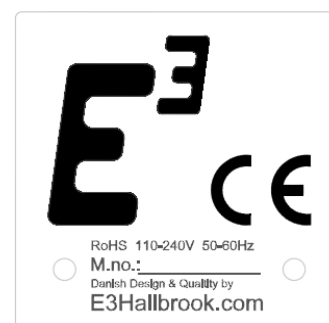
10. At the end of life

Used masks can be returned free of charge to Salbæk Technology Group, which will cause environmentally sound recycling of the used units.

11. CE RoHS Declaration of Conformity

The equipment complies with European Union requirements IFT for the association of Sami according to the same on the next page. Each machine is equipped with a machine sign where M.no. means as follows:

	Machine no. System			
Machine number	Production plant	Year	Series	Number
Sum	TGW=11			
	HK=12			
	ES=16			
1616006054	1600000000	16000000	6000	54



EC DECLARATION OF CONFORMITY

1. E3Hallbrook.com E3 Wrap 2100 pallet wrapper item no. 210021NN with series with machine no. each machine.

2. Name and address of the manufacturer and/or his authorized representative:

Sal-Tech Easy Packaging v/G.Salbæk, 6360 Tinglev, Denmark, CVR no.: 18429098 - TGW Or:

Sal-Tech HK Ltd., Yuen Long, NT., Hong Kong no.: 1553382 - STHK

Or: Sal-Tech Embalaje SL., Alhaurin de la Torre, Malaga Spain NIF: ES B01970045 STESL Or:

Sal-Tech, E3 Hallbrook.com local agent and distributor

(Stamp & Sign)

3. This declaration of conformity is issued under the sole responsibility of the manufacturer and his representative.

4. Object of the declaration can be identified by Item no. 220021NN series with machine no. each machine according to PPYYSSNN, consisting of the following build indicators:

- **PP:** Production plant of assembly, TGW (Sal-Tech DK ApS, Tinglev Denmark) code 11 & HK (Sal-Tech HK Ltd, Yuen Long Hong Kong) code 12.
- **YY:** Year of build, 2014 will be 14.
- **SS:** Series of build giving design reference, 001 and on going
- **NN:** Number of machine built within series.

5. The object of the declaration described above is in conformity with the relevant Community harmonization legislation:

98/37/EC, 73/23/EEC, 89/336/EEC and 93/68/EEC

6. References to the relevant harmonized standards used or references to the specifications in relation to which conformity is declared:

EN 12100-1 EN 12100-2, EN 60204-1, EN 294, EN 349, EN 1050, EN 50081-2, "Electromagnetic Compatibility – Generic emission standard Part 2. Industrial environment." EN 8500822 "Electromagnetic Compatibility – Generic immunity standard Part 2. Industrial environment.

Issued by E3Hallbrook.com, Sal-Tech Easy Packaging, on the 14.11.2020.

Gunnar Bjørn Salbæk
Industrial Design/CEO
Salbæk Technology Group

